

ON, J., SHIM, J., MACKAY, C., MURRAY, G., SAMUEL, L., PARNABY, C. and RAMSAY, G. 2021. Pathological response post neoadjuvant therapy for locally advanced rectal cancer is an independent predictor of survival. [Dataset]. *Colorectal disease* [online], 23(6), pages 1326-1333. Available from: <https://onlinelibrary.wiley.com/action/downloadSupplement?doi=10.1111%2Fcodi.15512&file=codi15512-sup-0001-Supinfo.docx>

Pathological response post neoadjuvant therapy for locally advanced rectal cancer is an independent predictor of survival. [Dataset]

ON, J., SHIM, J., MACKAY, C., MURRAY, G., SAMUEL, L., PARNABY, C. and RAMSAY, G.

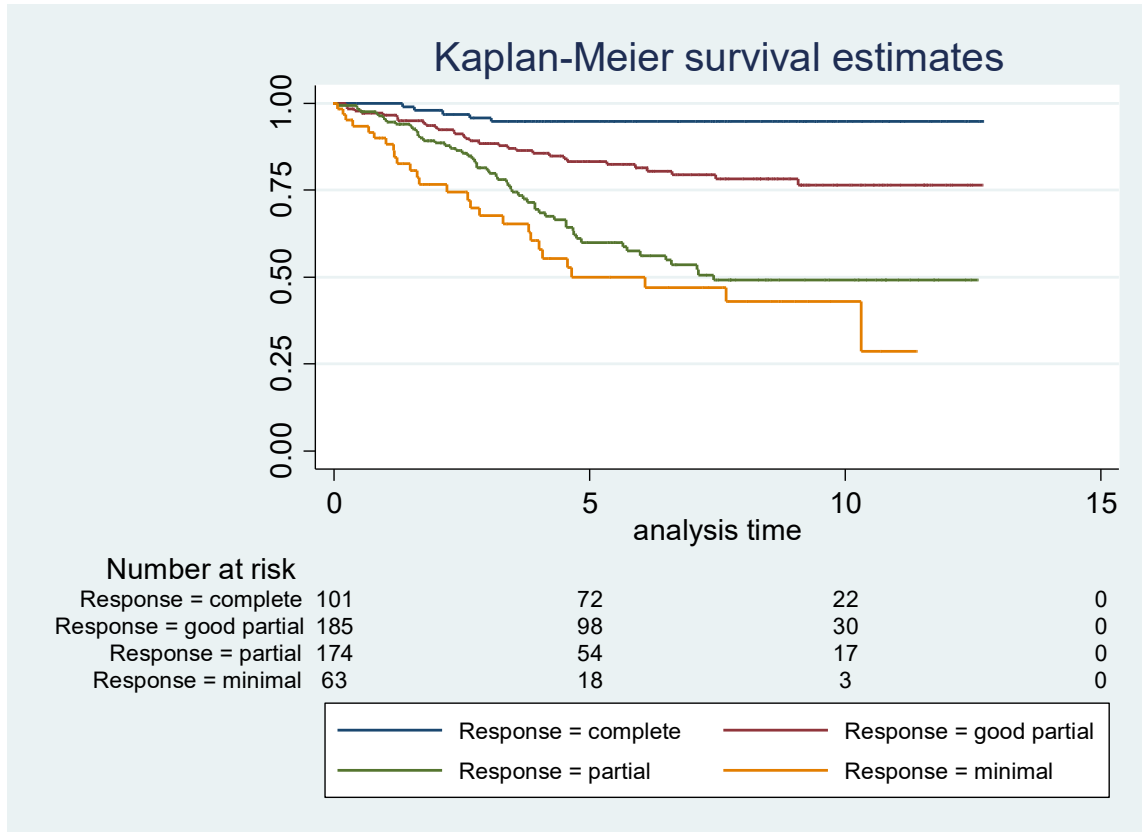
2021

This is the peer reviewed version of the following article: ON, J., SHIM, J., MACKAY, C., MURRAY, G., SAMUEL, L., PARNABY, C. and RAMSAY, G. 2021. Pathological response post neoadjuvant therapy for locally advanced rectal cancer is an independent predictor of survival. [Dataset]. Colorectal disease [online], 23(6), pages 1326-1333, which has been published in final form at <https://onlinelibrary.wiley.com/action/downloadSupplement?doi=10.1111%2Fcodi.15512&file=codi15512-sup-0001-Supinfo.docx>. This article may be used for non-commercial purposes in accordance with Wiley Terms and Conditions for [Use of Self-Archived Versions](#).

SUPPLEMENTARY DATA

Supplementary figure 1.

KM Curve for disease specific survival



Supplementary table 1. Univariate analysis for disease specific survival

Variables		Disease specific Survival			
		Hazards ratio	95% confidence interval		P value
			lower	upper	
Age	<50	reference			
	50-59	0.90	0.42	1.90	0.777
	60-69	1.14	0.57	2.31	0.706
	>=70	1.89	0.97	3.72	0.063
Gender	Female	reference			
	Male	0.95	0.66	1.37	0.780
Screen Detected	Yes	reference			
	No	1.70	0.91	3.16	0.094
Stage	0	reference			
	1	2.81	1.03	7.68	0.044
	2	8.32	3.30	20.99	<0.000
	3	15.15	6.05	37.91	<0.000
Complete excision	Yes	reference			
	No	4.89	3.33	7.18	<0.000
EMVI	No	reference			
	Yes	3.74	2.49	5.62	<0.000
Quality of TME	Good	reference			
	Moderate	1.23	0.79	1.90	0.358
	Poor	2.47	1.56	3.92	<0.000
Response to therapy	Complete	reference			
	Good partial	4.24	1.65	10.88	0.003
	Partial	10.37	4.15	25.92	<0.000
	Minimal	15.38	5.91	39.99	<0.000
T	0	reference			
	1	1.73	0.55	5.47	0.347
	2	3.26	1.36	7.81	0.008
	3	8.13	3.75	17.62	<0.000
	4	21.54	7.97	58.21	<0.000
N	0	reference			
	1	3.02	2.01	4.56	<0.000
	2	5.25	3.14	8.78	<0.000
Lymph node ratio	0	reference			
	0.01- 0.17	3.15	2.09	4.73	<0.000
	0.18 - 0.41	3.66	1.98	6.78	<0.000
	0.42 – 0.69	79.50	25.64	246.48	<0.000
	>0.7	49.34	14.49	168.06	<0.000

Variables		Disease specific Survival			
		Hazards ratio	95% confidence interval		P value
			lower	upper	
Quality of TME	complete	reference			
	moderate	1.12	0.71	1.77	0.621
	poor	1.95	1.19	3.18	0.008
EMVI	No				
	Yes	1.31	0.78	2.20	0.305
Response to therapy	complete	reference			
	good partial	2.70	1.03	7.06	0.043
	partial	4.74	1.82	12.35	0.001
	minimal	6.50	2.33	18.16	<0.000
Complete Excision	Yes	reference			
	No	1.77	1.10	2.86	0.019
Age	<50	reference			
	50-59	1.52	0.66	3.48	0.324
	60-69	1.47	0.68	3.20	0.330
	>70	2.33	1.09	5.00	0.030
LNR	0	reference			
	0.01-0.17	2.58	1.63	4.09	<0.000
	0.18-0.41	1.82	0.89	3.75	0.101
	0.42-0.69	27.33	7.91	94.41	<0.000
	>0.7	13.19	3.28	53.08	<0.000

Supplementary table 2. Multivariate analysis for disease specific survival