

SVENDSEN, M.J., WOOD, K.W., KYLE, J., COOPER, K., RASMUSSEN, C.D.N., SANDAL, L.F., STOCHKENDAHL, M.J., MAIR, F.S. and NICHOLL, B.I. 2020. Barriers and facilitators to patient uptake and utilisation of digital interventions for the self-management of low back pain: a systematic review of qualitative studies. *BMJ open* [online], 10(12), article ID e038800. Available from: <https://doi.org/10.1136/bmjopen-2020-038800>




Barriers and facilitators to patient uptake and utilisation of digital interventions for the self-management of low back pain: a systematic review of qualitative studies.

SVENDSEN, M.J., WOOD, K.W., KYLE, J., COOPER, K., RASMUSSEN, C.D.N., SANDAL, L.F., STOCHKENDAHL, M.J., MAIR, F.S. and NICHOLL, B.I.

2020



BMJ Open Barriers and facilitators to patient uptake and utilisation of digital interventions for the self-management of low back pain: a systematic review of qualitative studies

Malene Jagd Svendsen ^{1,2}, Karen Wood Wood,³ John Kyle,³ Kay Cooper,⁴ Charlotte Diana Nørregaard Rasmussen,² Louise Fleng Sandal ¹, Mette Jensen Stochkendahl ^{1,5}, Frances S Mair,³ Barbara I Nicholl³

To cite: Svendsen MJ, Wood KW, Kyle J, *et al.* Barriers and facilitators to patient uptake and utilisation of digital interventions for the self-management of low back pain: a systematic review of qualitative studies. *BMJ Open* 2020;**10**:e038800. doi:10.1136/bmjopen-2020-038800

► Prepublication history and additional materials for this paper is available online. To view these files, please visit the journal online (<http://dx.doi.org/10.1136/bmjopen-2020-038800>).

Received 26 March 2020
Revised 16 November 2020
Accepted 23 November 2020



© Author(s) (or their employer(s)) 2020. Re-use permitted under CC BY. Published by BMJ.

For numbered affiliations see end of article.

Correspondence to

Malene Jagd Svendsen;
mas@nrcwe.dk

ABSTRACT

Objectives Low back pain (LBP) is a leading contributor to disability globally. Self-management is a core component of LBP management. We aimed to synthesise published qualitative literature concerning digital health interventions (DHIs) to support LBP self-management to: (1) determine engagement strategies, (2) identify barriers and facilitators affecting patient uptake/utilisation and (3) develop a preliminary conceptual model of barriers and facilitators to uptake/utilisation.

Design Systematic review following PRISMA (Preferred Reporting Items for Systematic Reviews and Meta-Analyses) guidelines.

Data sources MEDLINE, Embase, CINAHL, PsycINFO, Cochrane Library, DoPHER, TRoPHI, Web of Science and OT Seeker, from January 2000 to December 2018, using the concepts: LBP, DHI and self-management.

Eligibility criteria Peer-reviewed qualitative study (or component) examining engagement with, or barriers and/or facilitators to the uptake/utilisation of an interactive DHI for self-management of LBP in adults (community, primary or secondary care settings).

Data extraction and synthesis Standardised data extraction form was completed. COREQ (Consolidated criteria for Reporting Qualitative research) checklist was used to assess methodology. Data was synthesised narratively for engagement strategies, thematically for barriers/facilitators to uptake/utilisation and normalisation process theory was applied to produce a conceptual model.

Results We identified 14 191 citations, of which 105 full-text articles were screened, and five full-text articles from four studies included. These were from community and primary care contexts in Europe and the USA, and involved 56 adults with LBP and 19 healthcare professionals. There was a lack of consideration on how to sustain engagement with DHIs. Examination of barriers and facilitators for uptake/utilisation identified four major themes: IT (information technology) usability–accessibility; quality–quantity of content; tailoring–personalisation; and motivation–support. These themes informed the development of a preliminary conceptual model for uptake/utilisation of a DHI for LBP self-management.

Conclusions We highlight key barriers and facilitators that should be considered when designing DHIs for

Strengths and limitations of this study

- This systematic review of qualitative studies explored barriers and facilitators for the uptake and utilisation of digital health interventions for low back pain (LBP) to inform the future design and implementation processes of such interventions.
- Searches in multiple databases and independent data extraction, quality appraisal and detailed data analysis are strengths of our review. However, our search strategy revealed that literature in the field of digital self-management for LBP is sparse as only a small number of eligible studies were identified.
- Given the limited literature, it is possible that not all important barriers and facilitators for uptake and utilisation have been identified and thus our conceptual model must be considered preliminary.

LBP self-management. Our findings are in keeping with reviews of DHIs for other long-term conditions, implying these findings may not be condition specific.

Systematic review registration A protocol for this systematic review was registered with <https://www.crd.york.ac.uk/PROSPERO/> (CRD42016051182) on 10 November 2016. https://www.crd.york.ac.uk/PROSPERO/display_record.php?ID=CRD42016051182

BACKGROUND

Low back pain (LBP) affects approximately 12% of the general population at any point in time;¹ it is the leading contributor to disability worldwide² and is associated with significant personal³ and societal costs.^{4,5} Self-management approaches are consistently recommended in clinical guidelines as a core component of LBP management;^{6,7} however, adherence to self-management strategies has proved challenging, especially without support and reinforcement.^{8,9} Digital health interventions (DHIs), health interventions accessed through a computer, mobile phone or other

handheld device, involving a web-based programme, desktop programme or application; offer a potential method of supporting self-management,^{10–12} and particularly the possibility of tailoring self-management advice, may hold significant potential for people with LBP.¹³ DHIs or ‘digital therapeutics’ are becoming increasingly popular and, as technological innovations increase, it is expected that this trend will continue.^{14 15} Until now, two systematic reviews have examined the use of DHIs to support the self-management of LBP. The first, by Garg *et al*, aimed to determine which web-based interventions are of benefit to patients.¹⁶ They identified nine randomised controlled trials (RCTs), including a total of 1796 participants. Four trials studied online cognitive behavioural therapy (CBT) with the remaining five trials studying web-based interventions with interactive features such as a virtual gym, testimonials or moderated discussion groups. Garg *et al* reported that online CBT approaches appeared to reduce catastrophising and improve patient attitudes, while studies of web-based interventions with interactive features used a variety of diverse outcome measures yielding inconclusive results; thus, making it difficult to draw firm conclusions regarding long-term impact for people with LBP.

The second review, by Nicholl *et al*, aimed to appraise the evidence concerning the use of interactive DHIs to support patient self-management of LBP with a focus on the outcome measures used and reported effects.¹⁷ They identified six completed RCTs studying digital tools for the self-management of LBP including a total of 2706 participants. Nicholl *et al* reported that only one of the six completed RCTs observed a between-group difference in favour of the digital intervention, with none of the studies demonstrating any evidence of harm. The authors noted that there was considerable variation in the nature and delivery of the interventions and inconsistency in the choice of outcomes and concluded that the current evidence base for DHIs to support the self-management of LBP remained weak.

Yet, hundreds of smartphone applications (apps) related to LBP are currently available on the app market, most developed with very little scientific rigour.¹⁸ In order to facilitate the development of appropriate and effective self-management DHIs for those with LBP, it is important to have an understanding of the factors that help or hinder user engagement and adherence. Across different conditions, multiple barriers and facilitators to engaging with DHIs have previously been identified, including issues such as motivation and support, digital literacy, privacy, usability, quality and tailoring.^{17 19} However, given the diverse range of DHIs available, it can be difficult to apply these findings to a specific patient population or piece of technology. Understanding the experience of users of DHIs designed specifically to assist self-management of LBP would help determine how to optimise DHIs for this group of users.

The purpose of this systematic review was therefore to synthesise and critically appraise the published qualitative

literature concerning the use of DHIs to promote self-management of LBP in order to address the following two research questions:

1. What engagement strategies at the time of enrolment have been used in DHIs aimed at supporting patient self-management of LBP?
2. What are the barriers and facilitators to patient uptake and utilisation of digital interventions to support self-management of LBP?

The final objective of the systematic review was to develop a preliminary conceptual model of barriers and facilitators to uptake and utilisation of digital interventions to support self-management of LBP.

METHODS

Protocol and registration

This review was registered in the International Prospective Register of Systematic Reviews, PROSPERO, registration no. CRD42016051182²⁰ and reporting is consistent with the Preferred Reporting Items for Systematic Reviews and Meta-Analyses (PRISMA) statement.²¹

Patient and public involvement

This research was done without patient involvement. Patients were not invited to comment on the study design and were not consulted to develop patient-relevant outcomes or interpret the results. Patients were not invited to contribute to the writing or editing of this document for readability or accuracy.

Eligibility criteria

Qualitative studies that examine engagement, barriers and/or facilitators to patient uptake and utilisation of digital interventions for the self-management of LBP were included; inclusion and exclusion criteria are outlined in [table 1](#).

Information sources and search strategy

A systematic search of bibliographic databases (MEDLINE, Embase, CINAHL, PsycINFO, Cochrane Library, DoPHer, TRoPHI, Web of Science and OT Seeker) was conducted after the search strategy had been developed in collaboration with a librarian at the Norwegian University of Science and Technology and experienced researchers in the field of LBP and digital health interventions. The search strategy has previously been described and published by Nicholl *et al*.¹⁷ Reference and citation tracking was used to identify relevant references. All databases were searched for publications using three groups of concepts: (1) low back pain, (2) digital intervention and (3) self-management. The search was conducted in three waves using the same search strategy: the first for publications added between January 2000 and March 2016, then a subsequent updated search for articles added between March 2016 and October 2016, and lastly, articles added between October 2016 and December 2018. Limitation of year of publication from 2000 onwards was chosen as

Table 1 Inclusion and exclusion criteria

Inclusion criteria

Study type	<ul style="list-style-type: none"> ▶ Published in peer-reviewed journals between 1st January 2000 and 18th December 2018. ▶ Original qualitative studies, studies involving secondary qualitative analysis of qualitative data and qualitative studies that were part of a mixed methods study (provided the qualitative methodology was described). ▶ Qualitative data collected via questionnaires or other methods not involving direct contact or observation of participants were eligible for inclusion provided questions were answered using free text and analysed using a qualitative approach. ▶ Qualitative data describing barriers and/or facilitators to the uptake or utilisation of digital interventions or containing a description of an engagement strategy (ie, any method used to get people to enrol into the study) from a patient or HCP's perspective.
Language	▶ Published in English, Danish or Norwegian.
Participants	▶ Adults >18 years with LBP or HCPs providing care for such patients.
Setting	▶ Community, primary or secondary care and other specialist contexts including those that recruit via media.
Digital intervention	<ul style="list-style-type: none"> ▶ Any intervention accessed through a computer, mobile phone or other handheld device, involving a web-based programme, desktop programme or application that provided self-management content (consistent with previous reviews^{17 45}). ▶ Interventions must involve an element of interaction between the user and the digital interface; this was defined as information being taken from users which then provided some form of automated feedback and/or advice in response. ▶ Interventions that included face-to-face contact were only included if this interaction was in addition to an automated, interactive digital component without direct HCP mediation.

Exclusion criteria

Study type	▶ Descriptive case studies, lexical studies that analyse natural language data presented as qualitative results, literature or systematic reviews, meta-analyses, studies without a sampling procedure (ie, no clear description of recruitment strategy) and commentary articles written to convey opinion or stimulate discussion with no research component.
------------	---

HCP, healthcare professional; ;LBP, low back pain.

our review was aimed at understanding current experiences of digital health technologies, justified by emerging Internet access around the millennium and the developing field of DHIs that followed, and further supported by other systematic reviews of digital interventions.^{16 22 23}

The complete search strategy, including specifications on the use of title, keywords or abstract screening is documented in online supplemental file 1.

Study selection

All identified citations were uploaded to DistillerSR software (Evidence Partners, Ottawa, Canada) and duplicates were removed. Title and abstract screening were performed by two of four independent reviewers (JK, MJS, KC and KWW) using DistillerSR. Any disagreement between the two reviewers at title screening level resulted in inclusion of the citation to abstract level and subsequently any disagreement at abstract level resulted in inclusion of the citation to the full-text screening level. Full-text screening was also performed by two of four independent reviewers (JK, MJS, KC and KWW) with any discrepancies at this level being resolved through discussion mediated by a third party (BIN, CDNR, MS and KC).

Data extraction

A comprehensive, standardised data extraction template designed specifically for this review in DistillerSR was used by two of four independent researchers (JK, MJS, BIN and KWW). Where available, information collected included the study title, authors, citation, year of study and publication, country, inclusion/exclusion criteria, aim, setting, characteristics of the digital intervention, recruitment methods, method of qualitative data collection and analysis, participant numbers and characteristics, any engagement strategies, barriers or facilitators identified either by the authors or in participant quotes, conclusions, limitations, funding sources and any potential conflicts of interest declared.

Quality appraisal

The complete 32-item Consolidated criteria for Reporting Qualitative research (COREQ) checklist^{24 25} was used to assess the methodological quality of the articles progressing to data extraction. Two of three reviewers (BIN, KC and KWW) independently identified whether each of the 32 items were reported or not, and descriptive information was provided where possible. Disagreements between reviewers were resolved through discussion. A priori cut-off points were not determined as studies were not excluded on the basis of methodological quality due to a lack of clear agreement on how best to appraise qualitative literature.²⁶ Two of the included articles report on the qualitative evaluation of the same intervention but were treated as separate articles for quality appraisal.^{27 28}

Data synthesis and analysis

Information on the engagement strategies, defined as methods used to recruit and initially motivate participants to enrol in the DHI study, in each study was described narratively as this was only provided descriptively in the included studies. Our data synthesis of barriers and facilitators to patient uptake and utilisation of the DHI for LBP involved a thematic approach.²⁹ Data on barriers and facilitators were extracted from results and discussion

sections of the included studies. Each item of extracted data was initially coded by one reviewer (MJS). When new codes appeared during the analysis of a particular article, the articles that had previously been examined were re-read and re-coded if appropriate. This continuous adjustment was carried out in cooperation with a second reviewer (KWW). Emergence and mapping of codes were discussed at coding clinics to ensure construction of themes that were internally homogeneous and externally heterogeneous (ie, no data excluded due to lack of a suitable theme, and no data falling between two themes or fitting into more than one theme)^{30 31} (MJS, KWW, FM and BIN). This resulted in a coding taxonomy for mapping identified codes as barriers or facilitators for each theme.

A preliminary conceptual model of barriers and facilitators to uptake and utilisation of DHIs to support self-management of LBP was developed by mapping the identified themes to the four constructs of Normalisation Process Theory (NPT). NPT is a sociological theory developed to explore the process of implementing a new complex intervention, in this case it can help explain how people individually and collectively embed DHIs into everyday practice.^{32 33} The identified themes were mapped to NPT constructs by four reviewers (KWW, FM, BIN and JK) using the coding framework presented in [table 2](#). This approach has been successfully applied in other systematic reviews of DHIs for chronic disease self-management issues^{19 34 35} and provides a solid conceptual basis from which to understand barriers and facilitators to patient and HCP uptake and utilisation of DHIs. Any themes that could not be coded to the NPT constructs were carefully noted to ensure that themes outside the scope of NPT would still be captured to assure appropriateness of the model.

RESULTS

Study selection

Of 14191 citations identified, 5973 were excluded as duplicates; 8113 were excluded following title and abstract screening (7436 at title level and 677 at abstract level) and a further 100 citations were excluded after full-text screening. Overall, five full-text articles were included in the review ([figure 1](#)). These articles described four separate studies and included a total of 75 participants. The two articles^{27 28} reporting on the same study (Oneself) consisted of a qualitative evaluation of a website²⁸ and a mixed-method reporting of the same qualitative data combined with quantitative (pre-use and post-use surveys and log files) data.²⁷ As these two studies included the same qualitative data and user quotes, they were combined for analysis purposes.

Study characteristics

The Get Well Fast³⁶ and Oneself studies^{27 28} were undertaken between 2006 and 2008 in the Netherlands and Switzerland, respectively. The MyBehaviorCBP study was

Table 2 Core constructs of Normalisation Process Theory (NPT)^{32 33} and related coding framework for development of preliminary conceptual model of barriers and facilitators to uptake and utilisations of digital interventions to support self-management of LBP

Core constructs of NPT	Coding framework
Coherence (sense making work; enrolling with the DHI): development of an individual and collective understanding of the new intervention when faced with operationalising it.	<ul style="list-style-type: none"> ▶ How people understand and view the benefits versus disbenefits of DHIs and decide whether it is appropriate for them to use. ▶ Motivation and willingness to commit to self-management activities.
Cognitive participation (engagement work; engaging with the DHI): relational work to build and sustain engagement with a new intervention.	<ul style="list-style-type: none"> ▶ Willingness to 'buy into' the DHI and whether it is a legitimate means to promote self-management of LBP. ▶ Issues relating to the support provided to use the DHI and level of engagement of HCPs involved with the DHI.
Collective action (operationalisation work; utilising the DHI): investment of effort and resources to enact the new intervention.	<ul style="list-style-type: none"> ▶ Ease of use, accessibility and appropriateness of the DHI. Resources, training, workload and technical support. <ul style="list-style-type: none"> ▶ Perceived quality and trustworthiness of DHI content and function.
Reflexive monitoring (appraisal work; maintaining engagement with DHI): evaluation of the impact of the new intervention on individuals and groups along with any reconfigurations suggested.	<ul style="list-style-type: none"> ▶ How people judge the new DHI and the self-monitoring work that accompanied uptake of the DHI. ▶ Ability to tailor to an individual's needs.
Codes falling outside the NPT framework	
	<ul style="list-style-type: none"> ▶ Inherent personal attributes such as personal physical or cognitive abilities that could promote or inhibit DHI use.
DHI, digital health intervention; HCP, healthcare professional; LBP, low back pain.	

conducted in the USA between 2012 and 2014,³⁷ while the study period for the Swedish Web-BCPA study was not reported.³⁸ The characteristics of the study participants are summarised in [table 3](#). No information was reported on comorbidities or ethnicity and only limited information on participant socioeconomic status was included.

DHI delivery mode varied between studies. In the Oneself, Get Well Fast and Web-BCPA studies, the DHI



PRISMA 2009 Flow Diagram

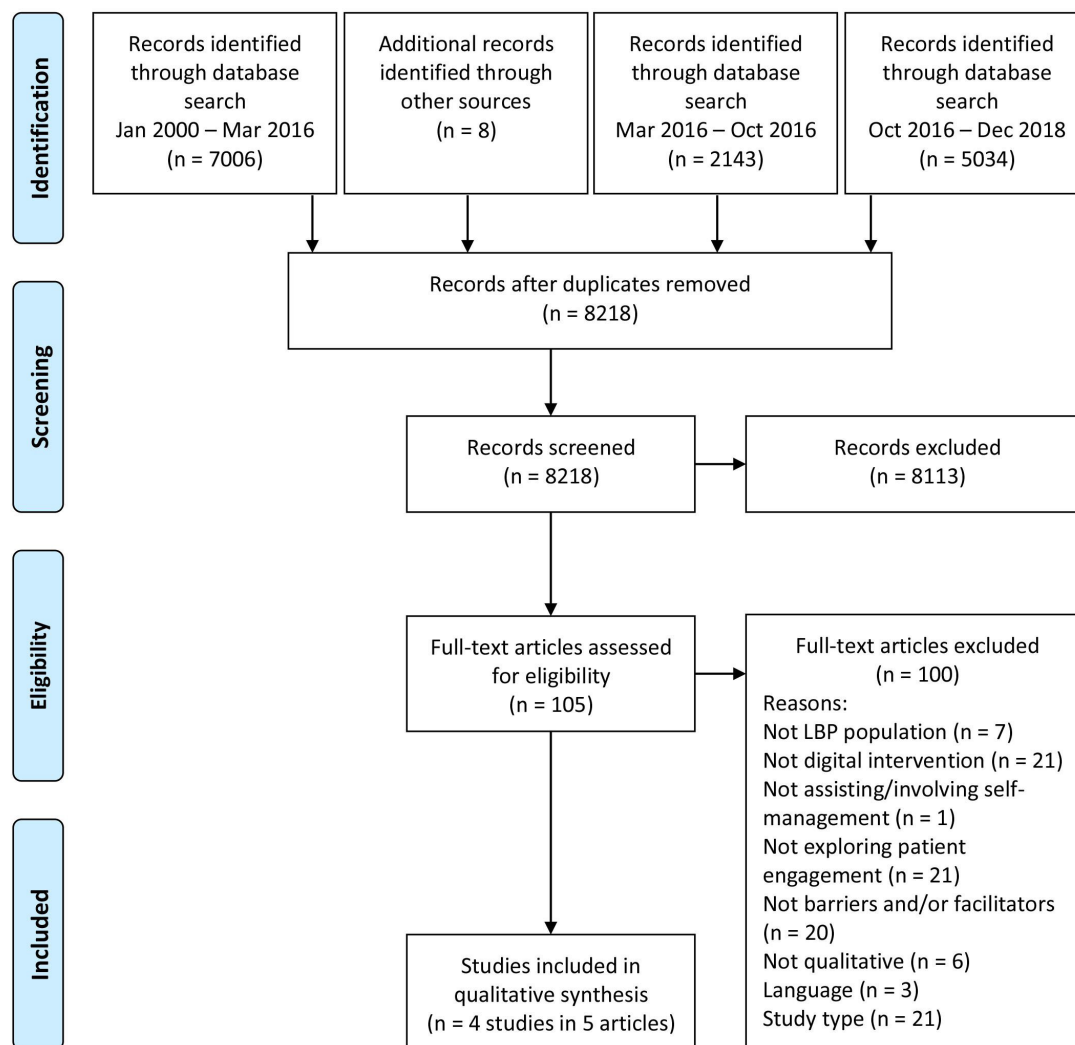


Figure 1 PRISMA flow diagram illustrating the screening process (Adapted from Moher *et al*²¹). LBP, low back pain; PRISMA, Preferred Reporting Items for Systematic Reviews and Meta-Analyses.

consisted of information available on websites to which participants had either open access^{27 28} or had personal log-ins.^{36 38} The content of the MyBehaviorCBP intervention was delivered to participants via a mobile phone app.³⁷ Two of the studies tailored the content of their DHI to the individual participant by collecting information about the users and providing content that matched their needs,^{36 37} in the Get Well Fast study, content was tailored based on patient reports on pain, limitations, treatment, counselling, reintegration to work, work situation and work characteristics, relations at work, personality and daily activities,³⁶ while the MyBehaviorCBP intervention collected sensory data from the users' smartphone (accelerometer signals and geolocation) and patient self-reported physical activity logs.³⁷ Three interventions offered time limited programmes of either 5 weeks^{36 37} or

8 weeks,³⁸ while the fourth intervention was an open-to-access website with no time restrictions^{27 28} (table 4).

Qualitative components of included studies

Sampling procedures used for the qualitative component of the included studies (table 4) were described for three of the studies as an invitation to participants to take part in an interview.^{27 28 36} Several sampling strategies were used, including purposive^{27 28} and convenience sampling,^{27 28 36} while in another study participants were sampled consecutively.³⁸ In the further study, where the qualitative component was part of a self-administered survey, all participants took part.³⁷ Qualitative interviews were conducted via telephone,³⁶ in the participant's home^{27 28 38} or at a local university,^{27 28} healthcare centre³⁸ or council building.³⁸ All of the interviews were semi-structured, recorded and

**Table 3** Participant characteristics of included studies

Study; country	Year of study	Number of participants in qualitative study	Age range	Sex (%)	SES
Oneself Switzerland ^{27 28}	2006–2008	n=18	28–72 years <29 years: n=1 30–39 years: n=3 40–49 years: n=5 50–59 years: n=6 >60 years: n=3	50% female	Education: Secondary school: n=2; high school or equivalent: n=11; university degree: n=5
Get Well Fast Netherlands ³⁶	2008	n=28 OP+=11 OP-=8 Employee: 9	40–50 years	OP: N/R Employee: 33% female	White and blue-collar workers. Various levels of education
MyBehaviorCBP USA ³⁷	2012–2014	n=10	31–60 years	70% female	N/R
Web-BCPA Sweden ³⁸	N/R	n=19	27–60 years	79% female	Education: Elementary school: n=2; secondary school: n=12; university degree: n=5) Employment: Permanent employment: n=12; temporary employment: n=3; unemployed: n=3; social benefits: n=1

DHI, digital health intervention; N, number; N/R, not reported; OP+, occupational physicians who recruited patients into DHI; OP-, occupational physicians who did not recruit patients into DHI; SES, socioeconomic status.

either transcribed verbatim^{27 28 38} or as written descriptions of answers including quotes.³⁶ For the MyBehaviorCBP study,³⁷ free-text answers from the electronic exit survey were extracted. Data was then analysed inductively,²⁷ using grounded theory,²⁸ thematically^{36 37} and using content analysis³⁸ to identify common themes. Just one article²⁸ referred to data collection and analysis continuing until data saturation was achieved.

Quality appraisal

The comprehensiveness of reporting varied across the included studies (online supplemental file 2) and ranged from 12 (38%) to 21 (67%) of the 32-item COREQ checklist.^{27 38} Items within domain 1 (Research team and reflexivity) generally had very poor reporting with several items not reported by any studies, for example, researcher occupation and experience and training were not reported by any of the included studies. All studies reported sampling procedure, sample size, setting of data collection, description of sample, recording, derivation of themes, quotations presented, consistency of data and findings and clarity of major themes

Engagement strategies

We defined engagement strategies as any method used to recruit and initially motivate participants to enrol in the DHI study. The identified engagement strategies included: use of mailing lists of retired personnel;³⁷ mailing list for a university wellness centre;³⁷ or invitation

from occupational physician (OP) or healthcare professional (HCP).^{27 28 36} In addition, the Oneself study advertised for participation through media: radio (project leader and managers interviewed about project at local radio station), television (rheumatologists involved in project spoke about project on local television station) and through a press conference for which the major daily journals from the area were invited.^{27 28}

Barriers and facilitators for uptake and utilisation of digital health interventions

We identified four major themes: (1) IT (information-technology) usability and accessibility, (2) quality and amount of content, (3) tailoring and personalisation and (4) motivation and support (table 5). Under each theme, both barriers and facilitators were identified. Distinction between uptake (initial engagement) and utilisation (use) in the included studies was not possible, and they are therefore treated as one. Participant quotes are provided in the text to substantiate the data for each theme. More exemplar quotations are provided in online supplemental file 3.

IT usability and accessibility

The first theme that emerged concerned functionality and usability, IT affinity or access and convenience of the DHI. A flexible and convenient structure with high user-friendliness aided use of DHIs.^{36 38} Inclusion of a variety of

Table 4 Participant inclusion criteria, sampling procedure for qualitative component and characteristics of digital intervention in included studies

Study	Inclusion criteria for digital health intervention	Inclusion criteria and sampling procedures for qualitative study	Characteristics of digital health intervention
Oneself ^{27 28}	<ul style="list-style-type: none"> ▶ Anyone could register and use the Oneself website. 	<ul style="list-style-type: none"> ▶ Registered users of Oneself for at least 6 months. ▶ Visited the website at least three times. ▶ Suffering from chronic LBP (duration not defined). ▶ Living in the Italian part of Switzerland. ▶ Purposive and convenience sampling ▶ Invitation to participate in interview sent via email to eligible users. ▶ Reminder email sent after 2 weeks to anyone who had not responded. ▶ 238 users invited to participate, 18 agreed. 	<ul style="list-style-type: none"> ▶ Open access website containing: <ul style="list-style-type: none"> ▶ Library - textual educational information on back pain. ▶ Radio - 10x2 min recorded audio messages on relevant topics. ▶ Gym - videos demonstrating stretching, stabilisation and mobilisation exercises accompanied by photographs and written descriptions. ▶ Forum - users could interact with other users and HCPs, monitored by a content manager. ▶ Chat room - users could interact with other users and HCPs. Once a week, a HCP would be available to discuss specific topics selected from conversations published on the Forum. ▶ Specialist answers - information on topics suggested by users. ▶ Testimonials - users could share stories and comment on other users' stories. ▶ Ability for users to request information they felt lacked on the website.
Get Well Fast ³⁶	<ul style="list-style-type: none"> ▶ Employees of KLM Royal Dutch Airlines or National Railways and their OPs. <p>Employee criteria:</p> <ul style="list-style-type: none"> ▶ Contracted for at least 12 hours per week. ▶ Absent from work for a minimum of 2 weeks due to non-specific back or neck pain. ▶ No serious health problems defined as 'warning flags: for example, fever, pain in arms or legs, serious disease'. ▶ Ability to speak and write in Dutch. ▶ Internet access. 	<ul style="list-style-type: none"> ▶ Users of the Get Well Fast website. ▶ The employees' OPs. ▶ All employees using the website and OPs were invited to participate in an interview. ▶ Convenience sample 	<ul style="list-style-type: none"> ▶ Web-based, 5 weeks programme during which the employee completed four questionnaires and received tailored information via a personal digital diary. ▶ Based on weekly questionnaires, information about advice on improving physical fitness, setting a daily timetable, pain-coping strategies and exercise instructions is provided. ▶ Employees spent around 15 min/day reading information, completing questionnaires and following exercises. ▶ Employee's OP had access to the employee's diary and received reports when the employee completed a questionnaire, detailing the employee's condition, current treatments and absence details.

Continued



Table 4 Continued

Study	Inclusion criteria for digital health intervention	Inclusion criteria and sampling procedures for qualitative study	Characteristics of digital health intervention
MyBehaviorCBP ³⁷	<ul style="list-style-type: none"> ▶ Aged 18–65 years ▶ History of chronic back pain (≥6 months). ▶ Willingness to use MyBehaviorCBP app on an Android mobile phone (own or provided by study). ▶ Reasonable level of outdoor movement (eg, travelling to and from work). ▶ Not being significantly housebound. ▶ Fluent in English ▶ Basic level of mobile proficiency. 	<ul style="list-style-type: none"> ▶ All participants received web-based exit survey; one question was open ended and results from this component of the study are included in this review. 	<ul style="list-style-type: none"> ▶ 5-week app based programme during which participants received recommendations for PA. ▶ App tracks participant's mobility state and geolocation using in-phone sensors or manual input. Recurring patterns of PA form base for new PA recommendations. ▶ Week 1 - baseline period: no recommendations were given. ▶ Week 2 and 3 - control phase: PA recommendations were random, generic and unrelated to participants' past behaviour. ▶ Week 4 and 5 - experimental phase: PA recommendations generated by MyBehaviorCBP based on PA behaviour during control phase. ▶ Participants were blinded to when the different PA recommendation forms were activated. Participants completed a daily in-phone survey regarding ease of following recommendations, how many recommendations they followed and their emotional state.
Web-BCPA ³⁸	<ul style="list-style-type: none"> ▶ Aged 18–63 years. ▶ Persistent musculoskeletal pain with duration of at least 3 months in the back, neck, shoulder and/or generalised pain. ▶ OMPSQ score ≥90, screening for psychosocial factors that indicates an estimated risk for long-lasting pain and future disability.⁴⁶ ▶ Work ability of at least 25% (assessment method N/R). ▶ Familiar with written and spoken Swedish. ▶ Internet and computer access. 	<ul style="list-style-type: none"> ▶ Participants must have spent at least 15 min per module in five of eight modules. ▶ Participants had to have reached their 4-month follow-up assessment ▶ Participants contacted consecutively with information about interview study in conjunction with 4-month follow-up. ▶ Formal invitation subsequently via telephone. 	<ul style="list-style-type: none"> ▶ Website-based Web Behavior Change Program for Activity (Web-BCPA) in combination with MMR. ▶ Web-BCPA consisted of eight modules: (1) pain, (2) activity, (3) behaviour, (4) stress and thoughts, (5) sleep and negative thoughts, (6) communication and self-esteem, (7) solutions and (8) maintenance and progress. ▶ Modules contained information, assignments and exercises delivered as educational texts, videos and writing tasks. ▶ Participants could access one new module/week during the first 8 weeks of rehabilitation, and had access to the website 24/7 for 4 months.

app, application; HCP, healthcare professional; LBP, low back pain; MMR, multimodal rehabilitation; N/R, not reported; OMPSQ, Örebro Musculoskeletal Pain Screening Questionnaire; OP, occupational physician; PA, physical activity.

Table 5 Factors affecting uptake and utilisation of DHIs for self-management of LBP

Theme	Subtheme	Barriers	Facilitators
IT usability and accessibility	Functionality and usability	▶ Too much choice between functions	▶ Flexible structure and navigation
		▶ Fixed advancement pace ▶ Issues logging into DHI	▶ Conveniently arranged ▶ Variation of media types (text, audio and video)
	IT affinity	▶ *Low user-friendliness ▶ *Issues logging into DHI ▶ *Low level of functionality (eg, registration, navigation, help desk)	▶ Reminders and notifications ▶ High user-friendliness ▶ *High user-friendliness
Access and convenience	IT affinity	▶ Lack of affinity with computers ▶ *Lack of affinity with web-based programmes	▶ Enjoying working with a computer
		▶ Not able to choose starting time of DHI ▶ *No access to computer during consultation	▶ Easily accessible with low effort ▶ Accessible at all hours and locations ▶ Accessible even during periods with severe pain symptoms ▶ Ability to take all the time needed
Quality and amount of content	Quality of content	▶ Contradictory content between DHI and HCP	▶ Trustworthy content and source ▶ Easily understandable content ▶ High quality of content ▶ Steady content ▶ *Appropriate content
	Amount of content	▶ Too much content to choose from ▶ Too much information to fully comprehend	▶ A lot of content to choose from
Tailoring and personalisation	Tailoring, specificity and personalisation	▶ Content not tailored to individual needs and/or pain severity ▶ Content perceived not new or relevant	▶ Content accounting for individual needs and/or pain severity ▶ Self-identification in content ▶ Opportunity to influence treatment
Motivation and support	Personal attributes and resources	▶ Adhering to biomedical model of LBP	▶ High level of awareness and self-management of LBP
		▶ Seeing LBP as a marginal problem ▶ Preferring other treatment regimens, for example, with human contact ▶ Lack of knowledge about LBP and treatments ▶ Physical health (eg, pain, fatigue) ▶ Psychological symptoms	▶ Aware that LBP would not be fixed with a medical solution and ready to accept active role ▶ Emotional and cognitive resources, for example, motivation, interest, commitment and self-confidence in self-management of LBP ▶ Enjoy solution focussed work
Support to use DHI	Support to use DHI	▶ HCP unsupportive of use of DHI ▶ No support from authorities	▶ HCP supportive of use of DHI ▶ Support from family ▶ Support from authorities ▶ Support from other sufferers (eg, successful testimonials)

Continued



Table 5 Continued

Theme	Subtheme	Barriers	Facilitators
	Features of DHI	<ul style="list-style-type: none"> ▶ DHI not guiding or supporting participants enough (eg, to plan for execution of physical activity recommendation from DHI) 	<ul style="list-style-type: none"> ▶ Interaction/interactivity ▶ Information about self-management of LBP ▶ Goal-setting ▶ Action-planning ▶ Follow-up and evaluation ▶ Adjusting treatment related to setbacks and progress ▶ Monitoring own progress in graphs ▶ Variation of content ▶ Update of content
	HCP factors for support of patients	<ul style="list-style-type: none"> ▶ *Time restrictions of consultations ▶ *Difficulty keeping DHI in mind during consultations ▶ *Difficulty providing patients with accurate information about DHI ▶ *Perceiving no benefit of DHI compared with usual treatment ▶ *Preferring other treatment regimens, for example, with human contact 	<ul style="list-style-type: none"> ▶ *DHI a good medium for counselling employees

*Occupational physician perspective.

DHI, digital health intervention; HCP, healthcare professional; IT, information technology; LBP, low back pain.

media types such as video was also appreciated^{27 28} as well as getting reminders or notifications from the DHI.^{27 28}

‘Usually I went on the website when I read the newsletter. I read the letter and then I’m there, it’s like a conditioned reflex (Woman, 49, nurse)’.^{27 28}

On the other hand, low user-friendliness and problems with logging in were barriers for use of DHIs for both study participants and HCPs.³⁶ A fixed starting point or set advancement pace were also demotivating for some users.³⁸ Affinity with computers and web-based programmes highly affected uptake of DHIs. Participants with a high level of computer affinity and who enjoyed working on a computer expressed positive feelings towards using DHIs,³⁸ whereas lack of computer affinity was an important barrier for uptake of the intervention.³⁶ Accessibility to a computer was surprisingly not a requirement for uptake to the study. When computers were readily available, DHIs were considered easy to access with unlimited 24 hours access.^{27 28 38}

‘... thanks to the programme (the Web-BCPA) I was able to perform the basic body awareness exercises of my own choice... and to repeat those that I felt most effective as many times that I preferred... the flexibility made it mine (the rehabilitation) (Woman, participant)’.³⁸

Even during periods with severe pain symptoms, a DHI was considered an attainable and effortless option as participants did not have to go anywhere (eg, a healthcare centre).^{27 28 38}

Quality and amount of content

Quality and amount of content provided in DHIs affected use for both participants and HCPs. Trustworthiness of the source and information provided facilitated use, and participants seemed to be reassured when knowing the content had been reviewed and validated by HCPs.^{27 28 38} For participants, richness and consistency of content facilitated use,^{27 28} especially when the content was easily understandable.³⁶

‘Knowing that there is a serious website where there are contributions, it strengthens you a bit (Woman, 37, teacher)’.²⁸

Likewise, content that suited the patients was appreciated by HCPs.³⁶ On the other hand, when participants experienced contradictory advice from their HCP and the DHI, this was a barrier for using the DHI.³⁶ Large volumes of information or too much content to choose from also limited uptake and utilisation, particularly in relation to the amount of time required to go through it.^{27 28 36}

‘There is a lot of information, probably almost too much, don’t you think? (Man, 47, bank director)’.^{27 28}

Tailoring and personalisation

The participants’ perception of the degree of tailoring and personalisation of the content to their needs was the third major theme affecting use of DHIs for self-management of LBP. Self-identification increased utilisation of DHIs when participants were able to recognise themselves in the content, for example, in the information and explanations about pain and symptoms, or thoughts related to dealing with LBP.^{27 28 38}

‘It gives you descriptions and you say: this stuff here... I see it, I see it! I recognise myself in it, I recognise myself here (Man, 58, teacher)’.^{27 28}

When the content of the DHI accounted for the individual participant’s activities, needs or pain severity it further encouraged use of the DHI.^{36–38}

‘I really liked the personalisation. I thought it was a nice touch. Suggestions were more specific and tailored, which for me made them more relevant and likely for me to use them (Participant)’.³⁷

Participants appreciated the opportunity to influence their own rehabilitation by being able to select exactly what they wanted from a variety of options that fitted their situation.^{37 38}

‘Previously I had read about CBT (cognitive behavioural therapy), but I had never thought of it as a help for my condition... I want to compare this rehabilitation with a smorgasbord from which is it easy to taste (Participant)’.³⁸

When content was not tailored to the individual participant or the participant’s pain severity, it was experienced as a barrier for use of the DHI as it was not perceived to apply to their situation. This in turn would negatively impact the participant’s motivation and sustained engagement.^{28 36} Content that was not perceived relevant or new to the participant could also lead to a feeling of hopelessness as participants’ got the impression that there was no solution to their problem.²⁸

Motivation and support

The fourth major theme related to the participants motivation and support, and included subthemes related to the personal attributes and resources of participants, support to use DHIs, features of DHIs and lastly HCPs’ perceptions and how they affect HCPs’ support of DHIs. Specific participant attributes impacted the utilisation of DHIs; already being involved or being ready to accept an active role in rehabilitation,²⁷ and having motivation, interest, commitment and confidence in self-managing LBP facilitated use.^{27 28 38} Enjoying solution focussed work, for example, as experience from day job, was also a facilitator.³⁸ Contrary, not wanting to take an active role,²⁷ or preferring other treatment regimens²⁷ hindered use, as

well as lacking information about treatments³⁸ or preferring other available treatment regimens, for example, with human contact.³⁶ Relying on a HCP to find a solution^{27 28} or seeing LBP as only a marginal problem, led to lower motivation for use of the DHI.²⁷ Furthermore, use of DHIs was constrained by physical^{36 38} or psychological³⁸ restrictions. Getting support from a variety of sources facilitated use; both support from outside and within the DHI. Support from family, authorities and HCPs was perceived as encouraging,³⁸ and so were successful testimonials from other users whose LBP symptoms had improved.^{27 28}

‘When you are going through a moment when you have backache and you read a testimony which says ‘yes, there is someone who was able to do it’, it gives you hope (Woman, 28, academic researcher)’.^{27 28}

Not having HCPs or local agencies (eg, authorities) support in their use of the DHI held participants back from using DHIs to manage their LBP.^{36 38}

‘I expected more commitment from my OP (occupational physician) (Employee)’.³⁶

Features of DHIs could both facilitate and restrain use. DHIs that were interactive, used goal-setting and action-planning and had a great variation of content encouraged use.^{37 38} Participants also appreciated information that guided them on how to self-manage their LBP (eg, exercises and advice),^{27 28 36–38} and some participants felt updates of content facilitated their use further.^{27 28} Furthermore, DHIs that allowed participants to monitor and reflect on their own progress, improvement or goal attainment, for example, through interactive graphs, were considered to enable self-management actions and to motivate further use.³⁸ Follow-up and evaluation on goal achievement was also appreciated and reinforced the importance of tailoring DHIs towards individual participant’s experience.

‘... days when I had a lot of pain I used to remain sedentary, and as soon as I had a better day I was eager to do all kinds of activities that day... before I started with the assignment activity planning (in the Web-BCPA) I was not aware of how my behaviour related to the days with pain, but by monitoring this over time I started to plan my daily activities in a more balanced way (Woman, participant)’.³⁸

On the contrary, DHIs that did not support or guide participants enough, for example, to execute recommendations given by the DHI, were perceived as constraining.³⁷

HCPs had reasons to support or not support participants’ use of DHIs for self-management of LBP. HCPs either did not perceive additional benefits of DHIs compared with usual care or preferred other treatment regimens, for example, ones that involved physical contact.³⁶

‘The ability to touch people is an essential element in the treatment of people with back or neck pain (Occupational physician)’.³⁶

HCPs also reported having too little time during consultations to support use of DHI or difficulty in keeping the DHI in mind during their consultation—and even if they remembered it, they struggled with providing patients with accurate information about the DHI.³⁶ However, HCPs who perceived DHIs as a good medium for counselling were positive about using and recommending DHIs.³⁶

Suggestions for improved utilisation

Participants of all included studies provided the authors with suggestions for how DHIs could be improved to facilitate continued or improved utilisation. As these items were only perceived as potential facilitators if implemented they are reported separately from the themes above. Some suggestions were improvement of usability of existing DHIs, for example, increased user-friendliness,³⁶ incorporation of illustrations and cartoons³⁶ or easier registration.³⁶ Optimisation of tailoring to adjust for changes over time,³⁶ or better adaption of physical activity recommendations that accommodated differences between weekdays and accounted for weather forecasts was also suggested.³⁷ System improvements that enabled the DHI to learn from participants’ activity level related to their pain days was also proposed.³⁷ Lastly, application of a participatory approach for the process of designing DHIs was suggested.³⁸ Other suggestions were new features to add to DHIs, for example, direct contact to HCPs via DHI,³⁶ a help desk,³⁶ content about how to deal with LBP mentally³⁶ and a sophisticated reminder system with just-in-time notifications for both planning and execution of physical activities.³⁷

Developing a conceptual understanding

We applied the NPT framework (table 2) to the taxonomy of barriers and facilitators as summarised in table 5. Most of the identified codes fell within the four NPT constructs, with the exception of codes related to participants’ own physical, mental and emotional health, which although affecting an individual’s capacity, they are not specific actionable tasks involved in the uptake and utilisation of a DHI for LBP. Applying the NPT framework allowed us to conceptualise how the codes identified may affect the uptake and utilisation of DHIs for the self-management of LBP (figure 2), at both an individual and collective level, through the four stages of deciding whether to enrol, engage, use and maintain engagement with such a tool.

DISCUSSION

We have conducted a systematic search of the literature to explore the methods used to encourage participation with DHIs for the self-management of LBP and the barriers and facilitators to patient uptake and utilisation of these tools. Our review identified four studies published in five articles, demonstrating that the literature remains sparse.

Our review has enabled us to develop a preliminary conceptual model for engagement and utilisation of a DHI for LBP self-management by applying the NPT framework to the barriers and facilitators identified in the included studies. The model suggests that users value DHIs that are easily understandable, which they can navigate at their own pace and which help enhance subsequent communication with HCPs, family and colleagues. Providing regular updates and prompts appears to help users engage with DHIs while the ability to interact with other users is viewed positively in terms of providing support, motivation and validation. Users expect

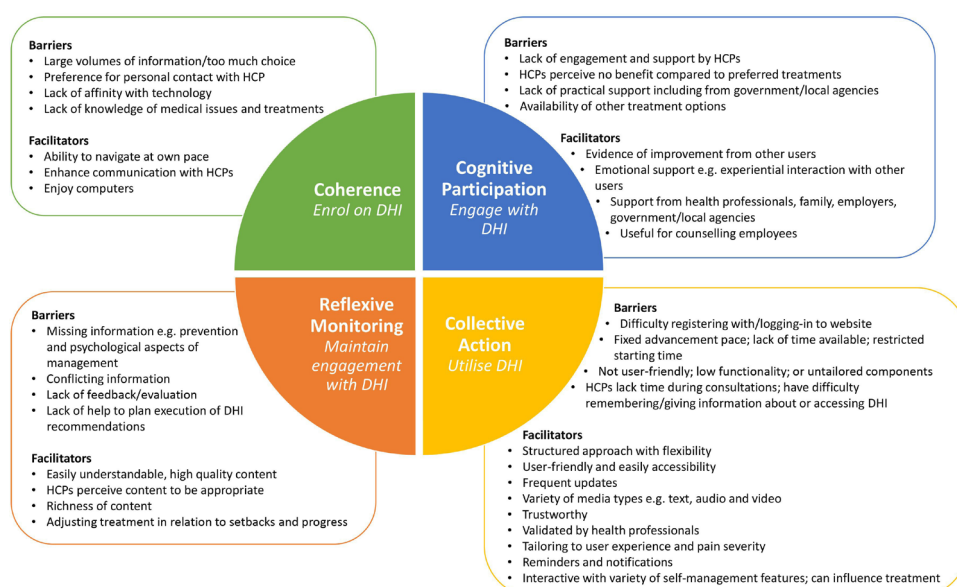


Figure 2 Preliminary conceptual model of barriers and facilitators to uptake and utilisation of low back pain DHIs. DHI, digital health intervention; HCP, health care professional.

information to be easily accessible, structured, up-to-date and accurate, with tailoring to individual user experience being particularly valued.

Conversely, large volumes of information and lack of time appear to have a negative impact on user understanding, motivation and engagement. Lack of support or encouragement by HCPs also appears to be off putting for some while others face challenges accessing the DHIs. Participant's own attributes including the symptoms they experienced and their attitudes and preferences for treatment for LBP can further restrict capacity to self-manage and influence motivation and engagement with DHIs. Other significant barriers to user engagement and utilisation include missing or conflicting information, content that was not tailored to the individual and lack of feedback or evaluation.

In this review we explored how studies engaged participants to enrol into the study and begin using a DHI, this was mainly through identification of potential participants and subsequent invitation. Sustaining engagement beyond initial participation was not discussed in-depth in any of the included studies, some used email prompts and regular updates or newsletters. However, all studies did report participants' suggestions to improve DHIs, which mainly focussed on improving usability, (dynamic) tailoring of content, additional features to support users and the inclusion of participants in the design of DHIs. While not considered as facilitators to uptake and utilisation, some positive consequences of using the DHIs were identified by some users, for example, acquiring a vocabulary and an individual understanding of their situation, and increased confidence in self-managing their LBP, which may have reinforced users in their self-management and in turn may have increased use of DHIs. Further, some general points to increase utilisation of DHIs for LBP were highlighted by participants, including the importance of participatory involvement of patients in the development of a DHI.

Comparison with previous literature

Although there was a significant variation in intervention recruitment and content in studies included in our review, there was a large degree of overlap in terms of the barriers and facilitators identified. Many of these are generally in keeping with the findings of other qualitative reviews for DHIs in general^{19 39} as well as those looking specifically at hypertension⁴⁰ and pain management in older adults.⁴¹ A review by O'Connor *et al*¹⁹ identified four main themes relating to barriers and facilitators to engagement and recruitment to DHIs in general: personal agency and motivation; personal life and values; engagement and recruitment approach, and quality of the DHI. Another review by Hardiker and Grant³⁹ identified five overarching themes concerning barriers and facilitators influencing engagement with eHealth services: characteristics of users; technological issues; characteristics of eHealth services; social aspects of use; and eHealth services in use. Despite the differing terminology of the major theme

headings used in these studies and those found in this review, comparison of the codes or subthemes reveals the barriers and facilitators to be broadly similar, suggesting that these may be generally transferable across DHIs. The main exception is the specific mention of security and privacy of personal information in these earlier reviews,^{19 39} which was not found as a barrier in this review, although this may be due to the small number of studies in our review compared with O'Connor *et al*¹⁹ and Hardiker and Grant,³⁹ reviews which included 19 and 50 studies, respectively.

Functionality and general IT issues

Factors including age, ethnicity, economic status, level of educational attainment and familiarity with the Internet are recognised as being significant factors influencing access to and engagement with DHIs.³⁹ O'Connor *et al*¹⁹ reported that a lack of digital literacy, issues accessing IT equipment or the Internet and the cost of such equipment or access are barriers to the use of DHIs. The user friendliness, design and ease of registration/logging in to a DHI were found to be significant issues for users in this review and should be carefully considered when planning a DHI.

Quality and amount of content

Trust is a significant issue when accessing information online.³⁹ Clinical endorsement seems to be important to users in terms of the perceived quality of content and is in keeping with the findings of other studies in this area.^{19 42} Additionally, consideration should be given to the potential for users to receive contradictory advice from the DHI and their HCP. Our findings suggest that while some users considered large volumes of information as a barrier, others valued the ability to read widely on the subject. This is thought to reflect individual preference and personal factors such as time pressures. Taking such preferences into account during the development and delivery of DHIs may increase user engagement.

Tailoring and personalisation

It is clear from our findings that user's symptomology, prior knowledge and experience play a role in engagement. Tailoring DHIs to the user's individual symptoms and functional limitations is thought to enhance engagement¹⁹ and may thus improve the effectiveness of the intervention. A recent review of DHIs for the self-management of LBP¹⁷ found that no DHI for LBP used tailoring to enhance effectiveness, but commented that this could be an important means of enhancing engagement. In addition, O'Connor *et al*¹⁹ recommended that any DHI should be designed and tailored to individual needs in order to reduce the self-care burden. Our findings suggest that users improved understanding of LBP and enhanced communication with their HCP during subsequent consultations. Some users commented that they would have appreciated some direct support from a HCP or that this might have enhanced engagement.



This finding is consistent with those of Steele *et al*⁴³ who during an evaluation of an Internet-based physical activity behaviour change programme, found that many participants in the Internet group would have preferred traditional face-to-face sessions. Some of the occupational physician's interviewed felt that they did not have the time and capacity within their consultation to discuss DHI use in detail.³⁶ If the intended purpose of a DHI is to facilitate HCP—patient communication then how the DHI or a supporting HCP dashboard could be designed to allow for efficient and useful interactions during a consultation should be considered at the design and development stage.

Motivation and support

Personal recommendations and social support were recognised as being important in encouraging DHI user registration and in fostering engagement.¹⁹ We found that some users valued the emotional support of being able to interact with other users. While this was a positive finding in our study and is consistent with those reported elsewhere,³⁹ there exists the possibility of potentially abusive or threatening behaviours developing online which could act as a barrier to some.⁴⁴ Other reports of discussion threads deviating from the original topic or containing misleading information³⁹ raise questions on the need for monitoring such interactive features. Our findings further suggest that an individual's personal attributes and resources (eg, emotional and cognitive) and attitudes towards self-management can influence their use of DHIs. Additional support may therefore be required for some potential users to participate and benefit from DHIs.

O'Connor *et al*¹⁹ reported that some individuals do not view technology as a way of addressing healthcare needs and prefer alternative approaches to managing their health issues such as seeking support from family, friends or healthcare professionals. They also highlight the potential for DHIs to be impersonal and commented on the lack of a therapeutic relationship, particularly in situations where sensitive health or social issues are involved. Such views were also reflected among individuals, including some HCPs, in our findings. In contrast, other users appreciate the freedom to access health information at a time and place that suits the user along with the anonymity DHIs can offer,⁴² issues that can be challenging for traditional healthcare services to match.

Strengths and limitations

This systematic review was conducted by an experienced team and follows the PRISMA guidelines for the reporting of systematic reviews. Our iterative search strategy used multiple databases and involved independent data extraction, quality appraisal and data analysis by two reviewers, with a third reviewer adjudicating in the case of any disagreements.

Our review does however have some limitations. Many DHIs are developed commercially and do not undergo

formal academic evaluation¹⁵ resulting in relatively sparse literature in this area. Our search strategy involved several eligibility criteria, including that studies must be published in peer-reviewed academic journals, and as such we did not identify any grey literature. However, it is unlikely that such findings, if available, would have held scientific rigour and added to the findings of this review. Further, as our analysis and synthesis of data was based on reviewing published literature, not the original data, this could have impacted on the background context to some of the quotes used in this manuscript.

The studies included in this review^{27 28 36–38} were conducted in real-life settings and as a result sampling procedures were acknowledged as being convenient, had the potential to be biased towards individuals who found the interventions beneficial and may not have been representative of all users. Furthermore, the literature contained very limited information on user's sociodemographic characteristics. However, as a consequence of the small number of studies identified by our search strategy, we did not exclude studies on the basis of quality, potentially reducing the reliability of the findings of this review.

Finally, due to the lack of literature in this field, our conceptual model for the update and utilisation of DHIs to support the self-management of LBP is limited to four studies to date. It is possible that not all the important barriers and facilitators may have been identified, and thus our conceptual model must be considered preliminary. As more rigorous studies are conducted and reported this model should be further developed and amended. This information will be of particular use to those involved in designing and implementing DHIs focussed on self-management of LBP and more widely.

CONCLUSIONS

Our systematic review highlights barriers and facilitators affecting the utilisation of DHIs for the self-management of LBP and identified key areas involved in embedding such interventions into everyday practice. The limited and varied quality of literature found by this review suggests that further primary research investigating the implementation of DHIs and user's experiences is required. Future research should aim to describe DHIs and their users in more detail and include descriptions of engagement strategies and barriers or facilitators encountered in order to enhance our knowledge of which approaches are likely to have the greatest impact on user engagement and outcomes, and for whom.

Author affiliations

¹Department of Sports Science and Clinical Biomechanics, University of Southern Denmark, Odense, Denmark

²Musculoskeletal disorders and physical work demands, National Research Centre for the Working Environment, Copenhagen, Denmark

³Institute of Health and Wellbeing, University of Glasgow, Glasgow, UK

⁴School of Health Sciences, Robert Gordon University, Aberdeen, UK

⁵Nordic Institute of Chiropractic and Clinical Biomechanics, Odense, Denmark

Twitter Mette Jensen Stochkendahl @MStochkendahl, Frances S Mair @FrancesMair and Barbara I Nicholl @BarbNicholl

Acknowledgements We would like to thank our librarian adviser Ingrid Ingeborg Riphagen, Department of Public Health and Nursing, Faculty of Medicine and Health Sciences, Norwegian University of Science and Technology (NTNU).

Contributors Study design was developed by all authors. Title, abstract and full-text screening was performed JK, MJS, KC and KWW with any discrepancies being resolved by BIN, CDNR and MS. JK, MJS, BIN and KWW carried out data extraction. JK, KWW and MJS conducted data synthesis and analysis aided by BIN and FM. Quality appraisal was assessed by BIN, KC and KWW. LFS, CDNR and MS critically scrutinised first drafts and provided comments. All authors read, commented and approved the final manuscript.

Funding This project has received funding from the European Union Horizon 2020 Research and innovation programme under grant agreement No. 689040.

Competing interests None declared.

Patient consent for publication Not required.

Provenance and peer review Not commissioned; externally peer reviewed.

Data availability statement Data are available upon reasonable request.

Supplemental material This content has been supplied by the author(s). It has not been vetted by BMJ Publishing Group Limited (BMJ) and may not have been peer-reviewed. Any opinions or recommendations discussed are solely those of the author(s) and are not endorsed by BMJ. BMJ disclaims all liability and responsibility arising from any reliance placed on the content. Where the content includes any translated material, BMJ does not warrant the accuracy and reliability of the translations (including but not limited to local regulations, clinical guidelines, terminology, drug names and drug dosages), and is not responsible for any error and/or omissions arising from translation and adaptation or otherwise.

Open access This is an open access article distributed in accordance with the Creative Commons Attribution 4.0 Unported (CC BY 4.0) license, which permits others to copy, redistribute, remix, transform and build upon this work for any purpose, provided the original work is properly cited, a link to the licence is given, and indication of whether changes were made. See: <https://creativecommons.org/licenses/by/4.0/>.

ORCID iDs

Malene Jagd Svendsen <http://orcid.org/0000-0001-9718-9425>

Louise Fleng Sandal <http://orcid.org/0000-0001-8436-1046>

Mette Jensen Stochkendahl <http://orcid.org/0000-0003-0297-8267>

REFERENCES

- Hoy D, Bain C, Williams G, *et al*. A systematic review of the global prevalence of low back pain. *Arthritis Rheum* 2012;64:2028–37.
- Vos T, Flaxman AD, Naghavi M, *et al*. Years lived with disability (YLDs) for 1160 sequelae of 289 diseases and injuries 1990–2010: a systematic analysis for the global burden of disease study 2010. *Lancet* 2012;380:2163–96.
- Nolet PS, Kristman VL, Côté P, *et al*. Is low back pain associated with worse health-related quality of life 6 months later? *Eur Spine J* 2015;24:458–66.
- Dagenais S, Caro J, Haldeman S. A systematic review of low back pain cost of illness studies in the United States and internationally. *Spine J* 2008;8:8–20.
- Maniadakis N, Gray A. The economic burden of back pain in the UK. *Pain* 2000;84:95–103.
- (NICE) NifHaCE. Low back pain and sciatica in over 16s: assessment and management: National Institute for health and care excellence (NICE), 2016. Available: <https://www.nice.org.uk/guidance/ng59>
- Authority DH. National clinical guideline: Interventions for recent onset low back pain [in Danish]: Danish Health Authority, 2016. Available: <https://www.sst.dk/da/udgivelse/2016/nkr-laenderygsmerter>
- Sluijs EM, Kok GJ, van der Zee J. Correlates of exercise compliance in physical therapy. *Phys Ther* 1993;73:771–82.
- Newson JT, Huguet N, Ramage-Morin PL, *et al*. Health behaviour changes after diagnosis of chronic illness among Canadians aged 50 or older. *Health Rep* 2012;23:49–53.
- Murray E, Burns J, See Tai S, *et al*. Interactive health communication applications for people with chronic disease. *Cochrane Database Syst Rev* 2005;30:CD004274.
- Beatty L, Lambert S. A systematic review of Internet-based self-help therapeutic interventions to improve distress and disease-control among adults with chronic health conditions. *Clin Psychol Rev* 2013;33:609–22.
- Zhao J, Freeman B, Li M. Can mobile phone Apps influence people's health behavior change? an evidence review. *J Med Internet Res* 2016;18:e287.
- Hayden JA, van Tulder MW, Tomlinson G. Systematic review: strategies for using exercise therapy to improve outcomes in chronic low back pain. *Ann Intern Med* 2005;142:776–85.
- Strecher V. Internet methods for delivering behavioral and health-related interventions (eHealth). *Annu Rev Clin Psychol* 2007;3:53–76.
- Laloo C, Jibb LA, Rivera J, *et al*. "There's a pain app for that": review of patient-targeted smartphone applications for pain management. *Clin J Pain* 2015;31:557–63.
- Garg S, Garg D, Turin TC, *et al*. Web-based interventions for chronic back pain: a systematic review. *J Med Internet Res* 2016;18:e139.
- Nicholl BI, Sandal LF, Stochkendahl MJ, *et al*. Digital support interventions for the self-management of low back pain: a systematic review. *J Med Internet Res* 2017;19:e179.
- Machado GC, Pinheiro MB, Lee H, *et al*. Smartphone apps for the self-management of low back pain: A systematic review. *Best Pract Res Clin Rheumatol* 2016;30:1098–109.
- O'Connor S, Hanlon P, O'Donnell CA, *et al*. Understanding factors affecting patient and public engagement and recruitment to digital health interventions: a systematic review of qualitative studies. *BMC Med Inform Decis Mak* 2016;16:120.
- International register of systematic reviews P. Available: https://www.crd.york.ac.uk/PROSPERO/display_record.php?ID=CRD42016051182
- Moher D, Liberati A, Tetzlaff J, *et al*. Preferred reporting items for systematic reviews and meta-analyses: the PRISMA statement. *Int J Surg* 2010;8:336–41.
- Fleming T, Bavin L, Lucassen M, *et al*. Beyond the trial: systematic review of real-world uptake and engagement with digital self-help interventions for depression, low mood, or anxiety. *J Med Internet Res* 2018;20:e199.
- Carolan S, Harris PR, Cavanagh K. Improving employee well-being and effectiveness: systematic review and meta-analysis of web-based psychological interventions delivered in the workplace. *J Med Internet Res* 2017;19:e271.
- Booth A, Hannes K, Harden A, *et al*. Consolidated criteria for reporting qualitative studies. In: *Guidelines for reporting health research: a user's manual*. Oxford: Wiley, 2014: 214–26.
- Tong A, Sainsbury P, Craig J. Consolidated criteria for reporting qualitative research (COREQ): a 32-item checklist for interviews and focus groups. *Int J Qual Health Care* 2007;19:349–57.
- Dixon-Woods M, Sutton A, Shaw R, *et al*. Appraising qualitative research for inclusion in systematic reviews: a quantitative and qualitative comparison of three methods. *J Health Serv Res Policy* 2007;12:42–7.
- Schulz PJ, Rubinelli S, Zufferey MC, *et al*. Coping with chronic lower back pain: designing and testing the online tool ONESELF. *J Computer-Med Commun* 2010;15:625–45.
- Caiata Zufferey M, Schulz PJ. Self-management of chronic low back pain: an exploration of the impact of a patient-centered website. *Patient Educ Couns* 2009;77:27–32.
- Thomas J, Harden A. Methods for the thematic synthesis of qualitative research in systematic reviews. *BMC Med Res Methodol* 2008;8:45.
- Graneheim UH, Lundman B. Qualitative content analysis in nursing research: concepts, procedures and measures to achieve trustworthiness. *Nurse Educ Today* 2004;24:105–12.
- Krippendorff K. *Content analysis: an introduction to its methodology*. 2nd edn. Thousand Oaks, CA: SAGE Publications, 2004: 422.
- May C, Finch T. Implementing, embedding, and integrating practices: an outline of normalization process theory. *Sociology* 2009;43:535–54.
- May CR, Mair F, Finch T, *et al*. Development of a theory of implementation and integration: normalization process theory. *Implement Sci* 2009;4:29.
- Mair FS, May C, O'Donnell C, *et al*. Factors that promote or inhibit the implementation of e-health systems: an explanatory systematic review. *Bull World Health Organ* 2012;90:357–64.
- Gallacher K, Morrison D, Jani B, *et al*. Uncovering treatment burden as a key concept for stroke care: a systematic review of qualitative research. *PLoS Med* 2013;10:e1001473.
- de Jong T, Heinrich J, Blatter BM, *et al*. The feasibility of a web-based counselling program for occupational physicians and employees on sick leave due to back or neck pain. *BMC Med Inform Decis Mak* 2009;9:46.



- 37 Rabbi M, Aung MS, Gay G, *et al.* Feasibility and acceptability of mobile Phone-Based Auto-Personalized physical activity recommendations for chronic pain self-management: pilot study on adults. *J Med Internet Res* 2018;20:e10147-e.
- 38 Nordin C, Michaelson P, Eriksson MK, *et al.* It's About Me: Patients' Experiences of Patient Participation in the Web Behavior Change Program for Activity in Combination With Multimodal Pain Rehabilitation. *J Med Internet Res* 2017;19:e22-e.
- 39 Hardiker NR, Grant MJ. Factors that influence public engagement with eHealth: a literature review. *Int J Med Inform* 2011;80:1–12.
- 40 Band R, Bradbury K, Morton K, *et al.* Intervention planning for a digital intervention for self-management of hypertension: a theory-, evidence- and person-based approach. *Implement Sci* 2017;12:25.
- 41 Parker SJ, Jessel S, Richardson JE, *et al.* Older adults are mobile too! Identifying the barriers and facilitators to older adults' use of mHealth for pain management. *BMC Geriatr* 2013;13:43.
- 42 Skinner H, Biscope S, Poland B. Quality of Internet access: barrier behind Internet use statistics. *Soc Sci Med* 2003;57:875–80.
- 43 Steele R, Mummery KW, Dwyer T. Development and process evaluation of an Internet-based physical activity behaviour change program. *Patient Educ Couns* 2007;67:127–36.
- 44 Horvath KJ, Danilenko GP, Williams ML, *et al.* Technology use and reasons to participate in social networking health websites among people living with HIV in the US. *AIDS Behav* 2012;16:900–10.
- 45 McLean G, Band R, Saunderson K, *et al.* Digital interventions to promote self-management in adults with hypertension systematic review and meta-analysis. *J Hypertens* 2016;34:600–12.
- 46 Linton S. Early assessment of psychological factors: the Örebro screening questionnaire for pain. In: Linton S, ed. *New avenues for the prevention of chronic musculoskeletal pain*. Amsterdam: Elsevier, 2002.

Supplementary File 1: Search details**MEDLINE - search details**

Ovid MEDLINE(R) 1946 to March Week 1 2016

1	exp back pain/(back pain\$ or lumbago or back ache\$ or backache\$ or (lumbar adj2 pain\$) or (spin\$ adj2 pain\$)).ti,ab,kw,kf.
2	computer peripherals/ or computer storage devices/ or computer terminals/ or modems/ or microcomputers/ or computers, handheld/ or minicomputers/ or attitude to computers/ or computers/ or computer systems/ or medical informatics/ or medical informatics applications/ or educational technology/ or audiovisual aids/ or telecommunications/ or multimedia/ or computer-assisted instruction/ or user-computer interface/ or hypermedia/ or video games/ or electronic health records/ or social networking/ or (computer\$ or microcomputer\$ or pc or pcs or mac or macs or internet or www or web or website\$ or webpage\$ or local area network\$).ti,ab,kf. or software.ti,ab,kf. or (cellular phone\$ or cellular telephone\$ or mobile\$ or cell phone\$ or cell telephone\$ or smartphone\$ or smart-phone\$ or smart-telephone\$).ti,ab,kf. or (handset\$ or hand-set\$ or wireless or wire-less or wifi or wi-fi or gps or global positioning system\$ or bluetooth or text messag\$ or texting or sms or short messag\$ or multimedia messag\$ or multi-media messag\$ or mms or instant messag\$ or social media\$ or facebook or twitter or webcast\$ or webinar\$ or podcast\$ or wiki or wikis or app or apps or android\$ or blackberr\$ or apple\$ or ios or iphone\$ or ipad\$ or s40 or symbian\$ or windows).ti,ab,kf. or ((electronic\$ or digital\$ or device\$) adj2 tablet\$).ti,ab,kf. or (video\$ or dvd or dvds).ti,ab,kf. or (youtube or you tube or vimeo).ti,ab,kf. or (online or on line or interactive).ti,ab,kf. or (chat room\$ or chatroom\$).ti,ab,kf. or (blog\$1 or web-log\$1 or weblog\$1).ti,ab,kf. or (bulletin board\$ or bulletinboard\$ or messageboard\$ or message board\$).ti,ab,kf. or (ehealth or e-health or mhealth or m-health).ti,ab,kf. or exp telemedicine/ or mobile applications/ or (pda or pdas or personal digital).ti,ab,kf. or device-based.ti,ab,kf. or (email\$ or e-mail\$ or electronic mail\$).ti,ab,kw,kf.
3	1 and 2
4	limit 3 to yr="2000 -Current"

Updated searches: 1) October 21 2016 (not shown), 2) December 18 2018 (below):

1	exp back pain/(back pain\$ or lumbago or back ache\$ or backache\$ or (lumbar adj2 pain\$) or (spin\$ adj2 pain\$)).ti,ab,kw,kf.
2	computer peripherals/ or computer storage devices/ or computer terminals/ or modems/ or microcomputers/ or computers, handheld/ or minicomputers/ or attitude to computers/ or computers/ or computer systems/ or medical informatics/ or medical informatics applications/ or educational technology/ or audiovisual aids/ or telecommunications/ or multimedia/ or computer-assisted instruction/ or user-computer interface/ or hypermedia/ or video games/ or electronic health records/ or social networking/
3	(computer\$ or microcomputer\$ or pc or pcs or mac or macs or internet or www or web or website\$ or webpage\$ or local area network\$).ti,ab,kf. or software.ti,ab,kf. or (cellular phone\$ or cellular telephone\$ or mobile\$ or cell phone\$ or cell telephone\$ or smartphone\$ or smart-phone\$ or smart-telephone\$).ti,ab,kf. or (handset\$ or hand-set\$ or wireless or wire-less or wifi or wi-fi or gps or global positioning system\$ or bluetooth or text messag\$ or texting or sms or short messag\$ or multimedia messag\$ or multi-media messag\$ or mms or instant messag\$ or social media\$ or facebook or twitter or webcast\$ or webinar\$ or podcast\$ or wiki or wikis or app or apps or android\$ or blackberr\$ or apple\$ or ios or iphone\$ or ipad\$ or s40 or symbian\$ or windows).ti,ab,kf. or ((electronic\$ or digital\$ or device\$) adj2 tablet\$).ti,ab,kf. or (video\$ or dvd or dvds).ti,ab,kf. or (youtube or you tube or vimeo).ti,ab,kf. or (online or on line or interactive).ti,ab,kf. or (chat room\$ or chatroom\$).ti,ab,kf. or (blog\$1 or web-log\$1 or weblog\$1).ti,ab,kf. or (bulletin board\$ or bulletinboard\$ or messageboard\$ or message board\$).ti,ab,kf. or (ehealth or e-health or mhealth or m-health).ti,ab,kf. or exp telemedicine/ or mobile applications/ or (pda or pdas or personal digital).ti,ab,kf. or device-based.ti,ab,kf. or (email\$ or e-mail\$ or electronic mail\$).ti,ab,kw,kf.
4	1 and (2 or 3)
5	limit 4 to yr="2000 -Current"
6	5 and (201610* or 201611* or 2017* or 2018*).ed.

Embase - search details

Ovid Embase (R) 1974 to 2016 March 18

1	exp backache/ or (spinal pain\$ or back pain\$ or lumbago or back ache\$ or backache\$ or (lumbar adj2 pain\$) or (spin\$ adj2 pain\$)).ti,ab,kw.
2	(exp backache/th or exp backache/pc or exp backache/rh or exp *backache/) not exp backache/su
3	exp communication protocol/ or computer assisted therapy/ or e-mail/ or human computer interaction/ or information technology/ or interactive voice response system/ or internet/ or mass communication/ or medical informatics/ or medical technology/ or mobile application/ or mobile phone/ or social media/ or exp telecommunication/ or exp telehealth/ or telephone/ or text messaging/ or webcast/ or wireless communication/
4	computer storage device/ or computer terminal/ or microcomputer/ or minicomputer/ or attitude to computers/ or computer/ or computer system/ or medical information system/ or educational technology/ or audiovisual aid/ or exp multimedia/ or computer interface/ or hypermedia/ or electronic medical record/ or social networking/
5	(computer\$ or microcomputer\$ or pc or pcs or mac or macs or internet or www or web or website\$ or webpage\$ or local area network\$ or software or (cellular phone\$ or cellular telephone\$ or mobile\$ or cell phone\$ or cell telephone\$ or smartphone\$ or smart-phone\$ or smart-telephone\$) or (handset\$ or handset\$ or wireless or wire-less or wifi or wi-fi or gps or global positioning system\$ or bluetooth or text messag\$ or texting or sms or short messag\$ or multimedia messag\$ or multi-media messag\$ or mms or instant messag\$ or social media\$ or facebook or twitter or webcast\$ or webinar\$ or podcast\$ or wiki or wikis or app or apps or android\$ or blackberr\$ or apple\$ or ios or iphone\$ or ipad\$ or s40 or symbian\$ or windows) or ((electronic\$ or digital\$ or device\$) adj2 tablet\$) or (video\$ or dvd or dvds) or (youtube or you tube or vimeo) or (online or on line or interactive) or (chat room\$ or chatroom\$) or (blog\$1 or web-log\$1 or weblog\$1) or (bulletin board\$ or bulletinboard\$ or messageboard\$ or message board\$) or (ehealth or e-health or mhealth or m-health) or (app or apps) or (pda or pdas or personal digital) or device-based or (email\$ or e-mail\$ or electronic mail\$)).ti,ab,kw.
6	2 and 3
7	limit 6 to yr="2000 -Current"
8	1 and (3 or 4 or 5)
9	limit 8 to yr="2000 -Current"
10	9 not 7

Updated searches: 1) October 21 2016 (not shown), 2) December 18 2018 (below):

1	exp backache/ or (spinal pain\$ or back pain\$ or lumbago or back ache\$ or backache\$ or (lumbar adj2 pain\$) or (spin\$ adj2 pain\$)).ti,ab,kw.
2	exp communication protocol/ or computer assisted therapy/ or e-mail/ or human computer interaction/ or information technology/ or interactive voice response system/ or internet/ or mass communication/ or medical informatics/ or medical technology/ or mobile application/ or mobile phone/ or social media/ or exp telecommunication/ or exp telehealth/ or telephone/ or text messaging/ or webcast/ or wireless communication/
3	computer storage device/ or computer terminal/ or microcomputer/ or minicomputer/ or attitude to computers/ or computer/ or computer system/ or medical information system/ or educational technology/ or audiovisual aid/ or exp multimedia/ or computer interface/ or hypermedia/ or electronic medical record/ or social networking/
4	(computer\$ or microcomputer\$ or pc or pcs or mac or macs or internet or www or web or website\$ or webpage\$ or local area network\$ or software or (cellular phone\$ or cellular telephone\$ or mobile\$ or cell phone\$ or cell telephone\$ or smartphone\$ or smart-phone\$ or smart-telephone\$) or (handset\$ or handset\$ or wireless or wire-less or wifi or wi-fi or gps or global positioning system\$ or bluetooth or text messag\$ or texting or sms or short messag\$ or multimedia messag\$ or multi-media messag\$ or mms or instant messag\$ or social media\$ or facebook or twitter or webcast\$ or webinar\$ or podcast\$ or wiki or wikis or app or apps or android\$ or blackberr\$ or apple\$ or ios or iphone\$ or ipad\$ or s40 or symbian\$ or windows) or ((electronic\$ or digital\$ or device\$) adj2 tablet\$) or (video\$ or dvd or dvds) or (youtube or you tube or vimeo) or (online or on line or interactive) or (chat room\$ or chatroom\$) or (blog\$1 or web-log\$1 or weblog\$1) or (bulletin board\$ or bulletinboard\$ or messageboard\$ or message board\$) or (ehealth or e-health or mhealth or m-health) or (app or apps) or (pda or pdas or personal digital) or device-based or (email\$ or e-mail\$ or electronic mail\$)).ti,ab,kw.
5	1 and (2 or 3 or 4)
6	limit 5 to yr="2000 -Current"

7	limit 5 to yr="2016 -Current"
---	-------------------------------

CINAHL - search details

CINAHL (R) March 2016 through EBSCOhost

S6	S1 AND S4	
S5	S1 AND S4	
S4	S2 OR S3	
S3	TI (computer* OR microcomputer* OR pc OR pcs OR mac OR macs OR internet OR www OR web OR website* OR webpage* OR "local area network*" OR software OR "cellular phone*" OR "cellular telephone*" OR mobile* OR "cell phone*" OR "cell telephone*" OR smartphone* OR smart-phone* OR smart-telephone* OR handset* OR hand-set* OR wireless OR wire-less OR wifi OR wi-fi OR gps OR "global positioning system*" OR bluetooth OR "text messag*" OR texting OR sms OR "short messag*" OR "multimedia messag*" OR "multi-media messag*" OR mms OR "instant messag*" OR "social media*" OR facebook OR twitter OR webcast* OR webinar* OR podcast* OR wiki OR wikis OR app OR apps OR android* OR blackberr* OR apple* OR ios OR iphone* OR ipad* OR s40 OR symbian* OR windows OR ((electronic* OR digital* OR device*) W2 tablet*) OR video* OR dvd OR dvds OR youtube OR "you tube" OR vimeo OR online OR "on line" or interactive OR "chat room*" OR chatroom* OR blog OR blogs OR web-log OR web-logs OR weblog OR weblogs OR "bulletin board*" OR bulletinboard\$ OR messageboard\$ OR "message board*" OR ehealth OR e-health OR mhealth OR m-health OR app OR apps OR pda OR pdas OR "personal digital" OR "device-based" OR email* OR e-mail* OR "electronic mail*") OR AB (computer* OR microcomputer* OR pc OR pcs OR mac OR macs OR internet OR www OR web OR website* OR webpage* OR "local area network*" OR software OR "cellular phone*" OR "cellular telephone*" OR mobile* OR "cell phone*" OR "cell telephone*" OR smartphone* OR smart-phone* OR smart-telephone* OR handset* OR hand-set* OR wireless OR wire-less OR wifi OR wi-fi OR gps OR "global positioning system*" OR bluetooth OR "text messag*" OR texting OR sms OR "short messag*" OR "multimedia messag*" OR "multi-media messag*" OR mms OR "instant messag*" OR "social media*" OR facebook OR twitter OR webcast* OR webinar* OR podcast* OR wiki OR wikis OR app OR apps OR android* OR blackberr* OR apple* OR ios OR iphone* OR ipad* OR s40 OR symbian* OR windows OR ((electronic* OR digital* OR device*) W2 tablet*) OR video* OR dvd OR dvds OR youtube OR "you tube" OR vimeo OR online OR "on line" or interactive OR "chat room*" OR chatroom* OR blog OR blogs OR web-log OR web-logs OR weblog OR weblogs OR "bulletin board*" OR bulletinboard\$ OR messageboard\$ OR "message board*" OR ehealth OR e-health OR mhealth OR m-health OR app OR apps OR pda OR pdas OR "personal digital" OR "device-based" OR email* OR e-mail* OR "electronic mail*"))	
S2	(MH "Computer peripherals") OR (MH "Computer storage devices") OR (MH "Computer terminals") OR (MH	

	"Microcomputers") OR (MH "Computers, hand-held") OR (MH "Attitude to computers") OR (MH "Computer systems") OR (MH "Medical informatics") OR (MH "Educational technology") OR (MH "Audiovisuals") OR (MH "Audiorecording") OR (MH "Videorecording") OR (MH "Multimedia") OR (MH "Computer Environment") OR (MH "Computer Assisted Instruction") OR (MH "Hypermedia") OR (MH "Video games") OR (MH "Mobile applications") OR (MH "Patient record systems") OR (MH "Computerized patient record") OR (MH "") OR (MH "Computer communication networks+") OR (MH "Telecommunications") OR (MH "Electronic Bulletin Boards") OR (MH "Electronic Mail") OR (MH "Instant Messaging") OR (MH "Interactive Voice Response Systems") OR (MH "Text Messaging") OR (MH "Cellular Phone") OR (MH "Telephone") OR (MH "Internet+") OR (MH "Remote Consultation") OR (MH "Telemedicine") OR (MH "Telehealth") OR (MH "Telenursing") OR (MH "Smartphone") OR (MH "User-Computer Interface+")	
S1	(MH "Back Pain+") OR Ti ("spinal pain* " OR "back pain*" OR lumbago OR "back acke*" OR backache OR (lumbar W2 pain*) OR (spin* W2 pain*)) OR AB ("spinal pain* " OR "back pain*" OR lumbago OR "back acke*" OR backache OR (lumbar W2 pain*) OR (spin* W2 pain*))	

Updated searches: 1) October 21 2016, 2) December 18 2018

Cochrane Library - search details (Through Wiley Online Library)

- Cochrane Database of Systematic Review (CDSR)
- Database of Reviews of Systematic Reviews (DARE, discontinued)
- Central Cochrane Register of Controlled Trials (CENTRAL)
- 'Method studies'
- 'Technology assessments'
- 'Economic evaluations'

#1	(spinal next pain* or back next pain* or lumbago or back next acke* or backache or (lumbar near/2 pain*) or (spin* near/2 pain*)):ti,ab,kw
#2	(computer* or microcomputer* or "pc" or "pcs" or "mac" or "macs" or "internet" or "www" or "web" or website* or webpage* or local next area next network* or "software" or cellular next phone* or cellular next telephone* or mobile* or cell next phone* or cell next telephone* or smartphone* or smart-phone* or smart-telephone* or handset* or hand-set* or "wireless" or "wire-less" or "wifi" or "wi-fi" or "gps" or global next positioning next system* or "bluetooth" or text next messag* or "texting" or "sms" or short next messag* or multimedia next messag* or multi-media next messag* or "mms" or instant next messag* or social next media* or "facebook" or "twitter" or webcast* or webinar* or podcast* or "wiki" or "wikis" or "app" or "apps" or android* or blackberr* or apple* or "ios" or iphone* or ipad* or "s40" or symbian* or "windows" or ((electronic* or digital* or device*) near/2 tablet*) or video* or "dvd" or "dvds" or "youtube" or "you tube" or "vimeo" or "online" or "on line" or "interactive" or chat next room* or chatroom* or "blog" or "blogs" or "web-log" or "web-logs" or "weblog" or "weblogs" or bulletin next board* or bulletinboard* or messageboard* or message next board* or "ehealth" or "e-health" or "mhealth" or "m-health" or "app" or "apps"

	or "pda" or "pdas" or "personal digital" or "device-based" or email* or e-mail* or electronic next mail*):ti,ab,kw
#3	#1 and #2

Updated searches: 1) October 21 2016 (not shown), 2) December 18 2018 (below):

#1	(spinal next pain* or back next pain* or lumbago or back next ache* or backache or (lumbar near/2 pain*) or (spin* near/2 pain*)):ti,ab,kw
#2	(computer* or microcomputer* or "pc" or "pcs" or "mac" or "macs" or "internet" or "www" or "web" or website* or webpage* or local next area next network* or "software" or cellular next phone* or cellular next telephone* or mobile* or cell next phone* or cell next telephone* or smartphone* or smart-phone* or smart-telephone* or handset* or hand-set* or "wireless" or "wire-less" or "wifi" or "wi-fi" or "gps" or global next positioning next system* or "bluetooth" or text next messag* or "texting" or "sms" or short next messag* or multimedia next messag* or multi-media next messag* or "mms" or instant next messag* or social next media* or "facebook" or "twitter" or webcast* or webinar* or podcast* or "wiki" or "wikis" or "app" or "apps" or android* or blackberr* or apple* or "ios" or iphone* or ipad* or "s40" or symbian* or "windows" or ((electronic* or digital* or device*) near/2 tablet*) or video* or "dvd" or "dvds" or "youtube" or "you tube" or "vimeo" or "online" or "on line" or "interactive" or chat next room* or chatroom* or "blog" or "blogs" or "web-log" or "web-logs" or "weblog" or "weblogs" or bulletin next board* or bulletinboard* or messageboard* or message next board* or "ehealth" or "e-health" or "mhealth" or "m-health" or "app" or "apps" or "pda" or "pdas" or "personal digital" or "device-based" or email* or e-mail* or electronic next mail*):ti,ab,kw
#3	#1 and #2
	With Publication Year from 2016 to 2018, with Cochrane Library publication date from Jan 2016 to Dec 2018, in Trials

#1	(spinal next pain* or back next pain* or lumbago or back next ache* or backache or (lumbar near/2 pain*) or (spin* near/2 pain*)):ti,ab,kw
#2	(computer* or microcomputer* or "pc" or "pcs" or "mac" or "macs" or "internet" or "www" or "web" or website* or webpage* or local next area next network* or "software" or cellular next phone* or cellular next telephone* or mobile* or cell next phone* or cell next telephone* or smartphone* or smart-phone* or smart-telephone* or handset* or hand-set* or "wireless" or "wire-less" or "wifi" or "wi-fi" or "gps" or global next positioning next system* or "bluetooth" or text next messag* or "texting" or "sms" or short next messag* or multimedia next messag* or multi-media next messag* or "mms" or instant next messag* or social next media* or "facebook" or "twitter" or webcast* or webinar* or podcast* or "wiki" or "wikis" or "app" or "apps" or android* or blackberr* or apple* or "ios" or iphone* or ipad* or "s40" or symbian* or "windows" or ((electronic* or digital* or device*) near/2 tablet*) or video* or "dvd" or "dvds" or "youtube" or "you tube" or "vimeo" or "online" or "on line" or "interactive" or chat next room* or chatroom* or "blog" or "blogs" or "web-log" or "web-logs" or "weblog" or "weblogs" or bulletin next board* or bulletinboard* or messageboard* or message next board* or "ehealth" or "e-health" or "mhealth" or "m-health" or "app" or "apps" or "pda" or "pdas" or "personal digital" or "device-based" or email* or e-mail* or electronic next mail*):ti,ab,kw
#3	#1 and #2

	With Cochrane Library publication date from Jan 2016 to Dec 2018, in Cochrane Reviews and Cochrane Protocols
--	--

PsycINFO - search details

Ovid PsycINFO (R) 1987 to March Week 4 2016

1	exp back pain/ or (spinal pain\$ or back pain\$ or lumbago or back ache\$ or backache\$ or (lumbar adj2 pain\$) or (spin\$ adj2 pain\$)).ti,ab,id.
2	exp Human Computer Interaction/ or Computer Peripheral Devices/ or Computer Software/ or Human Machine Systems/ or exp Electronic Communication/ or exp Computers/ or exp Mobile Devices/ or exp Internet/ or exp Computer Applications/ or Computer Attitudes/ or Information Technology/ or exp AUDIOVISUAL INSTRUCTION/ or exp AUDIOVISUAL COMMUNICATIONS MEDIA/ or exp EDUCATIONAL AUDIOVISUAL AIDS/ or Telecommunications Media/ or Multimedia/ or exp Social media/ or exp Telephone systems/ or Telemedicine/ or exp Websites/ or (computer\$ or microcomputer\$ or pc or pcs or mac or macs or internet or www or web or website\$ or webpage\$ or local area network\$ or software or cellular phone\$ or cellular telephone\$ or mobile\$ or cell phone\$ or cell telephone\$ or smartphone\$ or smart-phone\$ or smart-telephone\$ or handset\$ or hand-set\$ or wireless or wire-less or wifi or wi-fi or gps or global positioning system\$ or bluetooth or text messag\$ or texting or sms or short messag\$ or multimedia messag\$ or multi-media messag\$ or mms or instant messag\$ or social media\$ or facebook or twitter or webcast\$ or webinar\$ or podcast\$ or wiki or wikis or app or apps or android\$ or blackberr\$ or apple\$ or ios or iphone\$ or ipad\$ or s40 or symbian\$ or windows or ((electronic\$ or digital\$ or device\$) adj2 tablet\$) or video\$ or dvd or dvds or youtube or you tube or vimeo or online or on line or interactive or chat room\$ or chatroom\$ or blog\$1 or web-log\$1 or weblog\$1 or bulletin board\$ or bulletinboard\$ or messageboard\$ or message board\$ or ehealth or e-health or mhealth or m-health or app or apps or pda or pdas or personal digital or device-based or email\$ or e-mail\$ or electronic mail\$).ti,ab,id.
3	1 and 2
4	limit 3 to yr="2000 -Current"

Updated searches: 1) October 21 2016 (not shown), 2) December 18 2018 (below):

1	exp back pain/ or (spinal pain\$ or back pain\$ or lumbago or back ache\$ or backache\$ or (lumbar adj2 pain\$) or (spin\$ adj2 pain\$)).ti,ab,id.
2	exp Human Computer Interaction/ or Computer Peripheral Devices/ or Computer Software/ or Human Machine Systems/ or exp Electronic Communication/ or exp Computers/ or exp Mobile Devices/ or exp Internet/ or exp Computer Applications/ or Computer Attitudes/ or Information Technology/ or exp AUDIOVISUAL INSTRUCTION/ or exp AUDIOVISUAL COMMUNICATIONS MEDIA/ or exp EDUCATIONAL AUDIOVISUAL AIDS/ or Telecommunications Media/ or Multimedia/ or exp Social media/ or exp Telephone systems/ or Telemedicine/ or exp Websites/
3	(computer\$ or microcomputer\$ or pc or pcs or mac or macs or internet or www or web or website\$ or webpage\$ or local area network\$ or software or cellular phone\$ or cellular telephone\$ or mobile\$ or cell phone\$ or cell telephone\$ or smartphone\$ or smart-phone\$ or smart-telephone\$ or handset\$ or hand-set\$ or wireless or wire-less or wifi or wi-fi or gps or global positioning system\$ or bluetooth or text messag\$ or texting or sms or short messag\$ or multimedia messag\$ or multi-media messag\$ or mms or instant messag\$ or social media\$ or facebook or twitter or webcast\$ or webinar\$ or podcast\$ or wiki or wikis or app or apps or android\$ or blackberr\$ or apple\$ or ios or iphone\$ or ipad\$ or s40 or symbian\$ or windows or ((electronic\$ or digital\$ or device\$) adj2 tablet\$) or video\$ or dvd or dvds or youtube or you tube or vimeo or online or on line or interactive or chat room\$ or chatroom\$ or blog\$1 or web-log\$1 or weblog\$1 or bulletin board\$ or bulletinboard\$ or messageboard\$ or message board\$ or ehealth or e-health or mhealth or m-health or app or apps or pda or pdas or personal digital or device-based or email\$ or e-mail\$ or electronic mail\$).ti,ab,id.
4	1 and (2 or 3)
5	limit 4 to yr="2000 -Current"
6	5 and (20161* or 2017* or 2018* or 2019*).up.

DoPHER - search details

Database of Promoting Health Effectiveness Reviews

Focussed coverage of systematic and non-systematic reviews of effectiveness in health promotion and public health worldwide (3700).

Search date 11.04.2016

1	Freetext (Year): >1999
2	Freetext (All but Authors): "spinal pain" OR "back pain" OR "spinal pains" OR "back pains" OR lumbago OR "back ache" OR "back aches" OR "backache*"
3	1 AND 2

Updated searches: 1) October 21 2016, 2) December 18 2018

TROPHI - search details

Trials Register of Promoting Health Interventions

Focussed coverage of trials of interventions in health promotion and public health worldwide. It covers both randomised and non-randomised controlled trials and currently contains details of over 7,750 trials.

Search date 11.04.2016

5	Freetext (All but Authors): "spinal pain" OR "back pain" OR "spinal pains" OR "back pains" OR lumbago OR "back ache" OR "back aches" OR "backache*"
6	Freetext (Year): >1999
7	5 AND 6

Updated searches: 1) October 21 2016, 2) December 18 2018

Web of Science - search details

(Thomson Reuters)

Databases selected:

- Science Citation Index (SCI Expanded)
- Social Science Citation Index (SSCI)
- Conference Proceedings Citation Index – Science (CPCI-S)
- Conference Proceedings Citation Index – Social Science (SPCI-SSH)

Search date 6.4.2016

#3	#2 AND #1 <i>Indexes=SCI-EXPANDED, SSCI, CPCI-S, CPCI-SSH Timespan=2000-2016</i>
----	---

#2	<p>TOPIC: (computer\$ OR microcomputer* OR pc OR pcs OR mac OR macs OR internet OR www OR web OR website* OR webpage* OR "local area network*" OR software OR "cellular phone*" OR "cellular telephone*" OR mobile* OR "cell phone*" OR "cell telephone*" OR smartphone* OR smart-phone* OR smart-telephone* OR handset* OR hand-set* OR wireless OR wire-less OR wifi OR wi-fi OR gps OR "global positioning system*" OR bluetooth OR "text messag*" OR texting OR sms OR "short messag*" OR "multimedia messag*" OR "multi-media messag*" OR mms OR "instant messag*" OR "social media*" OR facebook OR twitter OR webcast* OR webinar* OR podcast* OR wiki OR wikis OR app OR apps OR android* OR blackberr* OR apple* OR ios OR iphone* OR ipad* OR s40 OR symbian* OR windows OR ((electronic* OR digital* OR device*) NEAR/2 tablet*) OR video* OR dvd OR dvds OR youtube OR "you tube" OR vimeo OR online OR "on line" OR interactive OR "chat room*" OR chatroom* OR blog OR blogs OR web-log OR web-logs OR weblog OR weblogs OR "bulletin board*" OR bulletinboard* OR messageboard* OR "message board*" OR ehealth OR e-health OR mhealth OR m-health OR pda OR pdas OR "personal digital" OR "device-based" OR email* OR e-mail* OR "electronic mail*")</p> <p><i>Indexes=SCI-EXPANDED, SSCI, CPCI-S, CPCI-SSH Timespan=2000-2016</i></p>
#1	<p>TOPIC: ("spinal pain*" OR "back pain*" OR lumbago OR "back ache*" OR backache* OR lumbar NEAR/2 pain* OR spin* NEAR/2 pain*)</p> <p><i>Indexes=SCI-EXPANDED, SSCI, CPCI-S, CPCI-SSH Timespan=2000-2016</i></p>

Updated searches: 1) October 21 2016, 2) December 18 2018

OT Seeker - search details

Occupational therapy systematic evaluation of evidence.

<http://www.otseeker.com/Search/BasicSearch.aspx>

1	back pain AND (internet OR web)
---	---------------------------------

Updated searches: 1) October 21 2016, 2) December 18 2018

Supplementary File 2: Consensus summary of quality appraisal as per the 32-item Consolidated Criteria for Reporting Qualitative Research (COREQ) checklist (Booth et al., 2014; Tong et al., 2007) and comprehensiveness of reporting.

No	Item	Guide questions	de Jong et al., 2009	Caiata Zufferey & Schulz, 2009	Schulz et al., 2010	Nordin et al., 2017	Rabbi et al., 2018	Number of articles reporting each item (%)
Domain 1: Research team and reflexivity								
Personal characteristics								
1	Interviewer/facilitator	Which author/s conducted the interview or focus group?	N/R	N/R	N/R	Principal author	N/R	1 (20%)
2	Credentials	What were the researcher's credentials? E.g. PhD, MD	N/R	N/R	N/R	PhD	PhD, PhD and MD	2 (40%)
3	Occupation	What was their occupation at the time of the study?	N/R	N/R	N/R	N/R	N/R	0 (0%)
4	Gender	Was the researcher male or female?	N/R	N/R	N/R	Female	N/R	1 (20%)
5	Experience and training	What experience or training did the researcher have?	N/R	N/R	N/R	N/R	N/R	0 (0%)
Relationship with participants								
6	Relationship established	Was a relationship established prior to study commencement?	N/R	N/R	N/R	Participants had participated in the RCT, of which the qualitative study was a later part	N/R	1 (20%)
7	Participant knowledge of the interviewer	What did the participants know about the researcher? e.g.	N/R	N/R	N/R	N/R	N/R	0 (0%)

		personal goals, reasons for doing the research						
8	Interviewer characteristics	What characteristics were reported about the interviewer/facilitator? e.g. Bias, assumptions, reasons and interests in the research topic	N/R	N/R	N/R	N/R	N/R	0 (0%)
Domain 2: Study design								
Theoretical framework								
9	Methodological orientation and theory	What methodological orientation was stated to underpin the study? e.g. grounded theory, discourse analysis, ethnography, phenomenology, content analysis	Thematic analysis	Grounded theory	Inductive approach	Content Analysis	Thematic analysis	2 (40%)
Participant selection								
10	Sampling	How were participants selected? e.g. purposive, convenience, consecutive, snowball	Convenience	Purposive and convenience	Purposive and convenience	Consecutively	No selection, all participants of the DHI took part.	5 (100%)
11	Method of approach	How were participants approached? e.g. face-to-face, telephone, mail, email	N/R	Email	Email	First approach not clear, but once given oral consent contacted by telephone	Method of sending invitations not clear. If eligible face-to-face meeting	4 (80%)
12	Sample size	How many participants were in the study?	11 OPs who recruited; 8 OPs who did not recruit & 9 employees	18	18	19	10	5 (100%)

13	Non-participation	How many people refused to participate or dropped out? Reasons?	7 OPs who did not recruit; 15 employees. Reasons - no time, insufficient use of program, problems with recalling experiences	238 approached to participate; 32 responded; 14 of these did not participate – reasons not stated	N/R	3 – reasons not stated	None	4 (80%)
Setting								
14	Setting of data collection	Where was the data collected? e.g. home, clinic, workplace	Telephone interviews	Home or University	Home or University	Health Care Centres, County City Buildings, Participant's home	Web-based exit survey	5 (100%)
15	Presence of non-participants	Was anyone else present besides the participants and researchers?	N/R	N/R	N/R	N/R	N/R	0 (0%)
16	Description of sample	What are the important characteristics of the sample? e.g. demographic data, date	Not stated for OPs; Employees 67% male; 40-50 years; 75% LBP; white & blue-collar workers; varying educational levels; varying sickness absence levels due to LBP	9 females, 9 males; 28-72 years; chronic LBP for 1-30 years; mix of diagnoses including 8 with no clear diagnosis; all had at least secondary school education (5 had degree);	9 females, 9 males; 28-72 years; chronic LBP 1-30 years ; mixed diagnoses, varied level of education and frequency of website use	15 females, 4 males; mean age 45; MSK pain for average 7.5 years; most at least secondary education; majority working.	7 females, 3 males; 31-60 years; chronic LBP 5-33 years duration; mixed diagnoses.	5 (100%)

			7weeks-6 months	range of website use amongst participants				
Data collection								
17	Interview guide	Were questions, prompts, guides provided by the authors? Was it pilot tested?	Topic guides used. Pilot tested	No questions, prompts or guides provided; Piloting not reported	No questions, prompts or guides provided; Piloting not reported	No questions, prompts or guides provided; Piloting not reported	Open-ended question in web survey provided. Piloting not reported	2 (40%)
18	Repeat interviews	Were repeat interviews carried out? If yes, how many?	N/R	N/R	N/R	N/R	N/R	0 (0%)
19	Audio/visual recording	Did the research use audio or visual recording to collect the data?	Audio recorded	Not specifically stated "Recorded" and transcribed verbatim	Audio recorded	Audio recorded	No – used free text web survey	5 (100%)
20	Field notes	Were field notes made during and/or after the interview or focus group?	N/R	N/R	N/R	N/R	N/R	0 (0%)
21	Duration	What was the duration of the interviews or focus group?	Approx. 30 minutes	Approx. 45 minutes	Approx. 45 minutes	31 – 56 minutes. Mean 48 minutes	N/R	4 (80%)
22	Data saturation	Was data saturation discussed?	Yes	Yes	N/R	N/R	N/R	2 (40%)
23	Transcripts returned	Were transcripts returned to participants for comment and/or correction?	N/R	N/R	N/R	N/R	N/R	0 (0%)
Domain 3: Analysis and findings								

Data analysis								
24	Number of data coders	How many data coders coded the data?	N/R	N/R	N/R	4	N/R	1 (20%)
25	Description of coding tree	Did authors provide a description of the coding tree?	N/R	N/R	N/R	Yes	N/R	1 (20%)
26	Derivation of themes	Were themes identified in advance or derived from the data?	Derived from data	Derived from data	Essentially inductive	Derived from data	Derived from data	5 (100%)
27	Software	What software, if applicable, was used to manage the data?	Excel	ATLAS.ti	ATLAS.ti	Open Code	N/R	4 (80%)
28	Participant checking	Did participants provide feedback on the findings?	N/R	N/R	N/R	N/R	N/R	0 (0%)
Reporting								
29	Quotations presented	Were participant quotations presented to illustrate the themes / findings? Was each quotation identified? e.g. participant number	Few direct quotes; only identified as either OP or employee	Yes - identified by gender, age & occupation	Yes - identified by gender, age & occupation	Yes – identified by participant number and gender	Yes – identified by participant number	5 (100%)
30	Data and findings consistent	Was there consistency between the data presented and the findings?	A little unclear – little qualitative data presented	Yes	Yes	Yes	Yes	5 (100%)
31	Clarity of major themes	Were major themes clearly presented in the findings?	Yes	Yes	Yes	Yes	Yes	5 (100%)
32	Clarity of minor themes	Is there a description of diverse cases or discussion of minor themes?	Not clear	Range of themes presented but not clear what is major/minor	Range of themes presented but not clear what is major/minor	Yes	Yes	2 (40%)

TOTAL, number (%)	14 (44%)	15 (47%)	12 (38%)	21 (67%)	14 (44%)	
DHI: digital health intervention; LBP: low back pain; N/R: not reported; OPs: occupational physicians;						

References

Booth A, Hannes K, Harden A, Noyes J, Harris J, Tong A. COREQ (Consolidated Criteria for Reporting Qualitative Studies). In: Moher D, Altman DG, Schulz KF, Simera I, Wager E, editors. Guidelines for reporting health research: A user's manual. Oxford: Wiley; 2014. p. 214-26.

Caiata Zufferey M, Schulz PJ. Self-management of chronic low back pain: an exploration of the impact of a patient-centered website. Patient education and counseling. 2009;77(1):27-32.

de Jong T, Heinrich J, Blatter BM, Anema JR, van der Beek AJ. The feasibility of a web-based counselling program for occupational physicians and employees on sick leave due to back or neck pain. BMC medical informatics and decision making. 2009;9:46.

Nordin C, Michaelson P, Eriksson MK, Gard G. It's About Me: Patients' Experiences of Patient Participation in the Web Behavior Change Program for Activity in Combination With Multimodal Pain Rehabilitation. Journal of medical Internet research. 2017;19(1):e22-e.

Rabbi M, Aung MS, Gay G, Reid MC, Choudhury T. Feasibility and Acceptability of Mobile Phone-Based Auto-Personalized Physical Activity Recommendations for Chronic Pain Self-Management: Pilot Study on Adults. Journal of medical Internet research. 2018;20(10):e10147-e.

Schulz PJ, Rubinelli S, Zufferey MC, Hartung U. Coping with Chronic Lower Back Pain: Designing and Testing the Online Tool ONESELF. Journal of Computer-Mediated Communication. 2010;15(4):625-45.

Tong A, Sainsbury P, Craig J. Consolidated criteria for reporting qualitative research (COREQ): a 32-item checklist for interviews and focus groups. International journal for quality in health care : journal of the International Society for Quality in Health Care. 2007;19(6):349-57.

Supplementary File 3: Taxonomy of barriers and facilitators with exemplar quotations**References:**

- [27] Schulz PJ, Rubinelli S, Zufferey MC, Hartung U. Coping with Chronic Lower Back Pain: Designing and Testing the Online Tool ONESELF. *Journal of Computer-Mediated Communication*. 2010;15(4):625-45.
- [28] Caiata Zufferey M, Schulz PJ. Self-management of chronic low back pain: an exploration of the impact of a patient-centered website. *Patient education and counseling*. 2009;77(1):27-32.
- [36] de Jong T, Heinrich J, Blatter BM, Anema JR, van der Beek AJ. The feasibility of a web-based counselling program for occupational physicians and employees on sick leave due to back or neck pain. *BMC medical informatics and decision making*. 2009;9:46.
- [37] Rabbi M, Aung MS, Gay G, Reid MC, Choudhury T. Feasibility and Acceptability of Mobile Phone-Based Auto-Personalized Physical Activity Recommendations for Chronic Pain Self-Management: Pilot Study on Adults. *Journal of medical Internet research*. 2018;20(10):e10147-e.
- [38] Nordin C, Michaelson P, Eriksson MK, Gard G. It's About Me: Patients' Experiences of Patient Participation in the Web Behavior Change Program for Activity in Combination With Multimodal Pain Rehabilitation. *Journal of medical Internet research*. 2017;19(1):e22-e.

Barriers and facilitators for patient uptake and utilisation of digital self-management interventions for LBP					
Theme	Taxonomy	Barriers	Exemplar quotations	Facilitators	Exemplar quotations
IT usability and accessibility	Functionality and usability	<ul style="list-style-type: none"> • Too much choice between functions • Fixed advancement pace • Issues logging into DHI • *Low user-friendliness • *Issues logging into DHI • *Low level of functionality (e.g. registration, navigation, helpdesk) 	<ul style="list-style-type: none"> • Though, the freedom of choice in the Web-BCPA entailed perceptions of restrained patient participation for some informants [38, p4] • Finally, some OPs faced practical obstacles such as log-in problems [...] [36, p5] • Although OPs were generally positive about the user-friendliness and 	<ul style="list-style-type: none"> • Flexible structure and navigation • Conveniently arranged • Variation of media types (text, audio and video) • Reminders and notifications • High user-friendliness • *High user-friendliness 	<ul style="list-style-type: none"> • <i>I liked this thing about the exercise video a lot because seeing it with the video gives you a lot more. They seem simple, but a lot of times when there are drawings I can't understand them easily, then I don't have the will anymore [28, p29]</i> • It was enough to open the mailbox for reasons that could be independent of cLBP

			<p>design of the program, some felt that further improving user-friendliness (functionality) might enhance its use. [...]</p> <p>It should also be easier to register employees in the program [36, p6]</p> <ul style="list-style-type: none"> • Although, some informants perceived restrained patient participation by the fact that [...] not being able to select a faster advancement in the program by themselves [36, p5] • A small number of employees either had problems with 'logging in into the program' [...] [36, p6] 		<p>to get a reminder of the website and the necessity of self-management [...] <i>I usually went on the website when I read the newsletter. I read the letter and then I'm there, it's like a conditioned reflex</i> [27, p641]</p> <ul style="list-style-type: none"> • <i>It would be helpful to have reminders and suggestions pop up in the morning or at other chosen times. This could be optional and set by the user</i> [37, p10] • These effects could be reached thanks to the specificities of the website, that is its [...] multimediality (material was provided in written, audio and video form), usability (the website was easy to use [...]) [28, p31] • They [the users] were positive about the content, user-friendliness and web-based design. They
--	--	--	--	--	--

					<p>said the information was easy to understand, to the point and conveniently arranged [36, p5]</p> <ul style="list-style-type: none"> Finally, almost all OPs were positive about the user-friendliness and design of the program [36, p5]
	IT affinity	<ul style="list-style-type: none"> Lack of affinity with computers *Lack of affinity with web-based programmes 	<ul style="list-style-type: none"> Some OPs had no affinity with the use of a web-based program in general and therefore preferred not to use this method [36, p5] A small number of employees [...] had 'no affinity with computers' [36, p6] 	<ul style="list-style-type: none"> Enjoying working with a computer 	<ul style="list-style-type: none"> In addition, some informants stated that [...] to enjoy working at the computer, facilitated patient participation in the rehabilitation [38, p6]
	Access and convenience	<ul style="list-style-type: none"> Not able to choose starting time of DHI *No access to computer during consultation 	<ul style="list-style-type: none"> Although, some informants perceived restrained patient participation by the fact that they were not able to choose the starting time of the Web-BCPA course themselves (due to study protocol) [...] [38, p5] Finally, some OPs faced practical 	<ul style="list-style-type: none"> Easily accessible with low effort Accessible at all hours and locations Accessible even during periods with severe pain symptoms Ability to take all the time needed 	<ul style="list-style-type: none"> Patient participation was emphasized by having access to the Web-BCPA on computer or tablet at all hours and locations [38, p5] The opportunities to work in the Web-BCPA at home were experienced to provide continuity in

			obstacles such as [...] no access to a computer or the internet in their consulting rooms [36, p5]		<p>the rehabilitation [38, p5]</p> <ul style="list-style-type: none"> • These effects could be reached thanks to the specificities of the website, that is its usability ([...] accessible from home without the necessity of intermediaries) [28, p31] • [...] informants described that the Web-BCPA provided opportunities to rehabilitation during periods with severe symptoms without having to be present at the health care center [38, p6]
Quality and quantity of content	Quality of content	<ul style="list-style-type: none"> • Contradicting content between DHI and HCP 	<ul style="list-style-type: none"> • For some employees the exercises suggested by the program conflicted with the exercises given by the physiotherapist [36, p5] 	<ul style="list-style-type: none"> • Trustworthy content and source • Easily understandable content • High quality of content • Steady content • *Appropriate content 	<ul style="list-style-type: none"> • <i>Knowing there is a serious website where there are contributions, it strengthens you a bit [28, p29]</i> • Some users felt reassured because they had a trustworthy place where they could address concerns [27, p641]

					<ul style="list-style-type: none">• These effects could be reached thanks to the specificities of the website, that is its [...] trustworthiness (material was controlled by health professionals according to the criteria of Evidence Based Medicine) [28, p31]• They [the users] were positive about the content, user-friendliness and web-based design. They said the information was easy to understand, to the point and conveniently arranged [36, p5]• More than half of the OPs were positive about the content (e.g. information, exercises, instructions) [36, p5]• [...] the stability of the material helped them to construct their personal frame of reference about the nature and the
--	--	--	--	--	--

					course of their cLBP [27, p640]
	Amount of content	<ul style="list-style-type: none"> • Too much content to choose from • Too much information to fully comprehend 	<ul style="list-style-type: none"> • According to some people, Oneself provided too much information, risking creating confusion about the comprehension of the health problem and the identification of the best way to treat it: <i>There is a lot of information, probably almost too much, don't you think?</i> [28, p29] • [...] having difficulties to choose from its content, were experienced to restrain patient participation [38, p8] 	<ul style="list-style-type: none"> • A lot of content to choose from 	<ul style="list-style-type: none"> • The richness and trustworthiness of the information [...] helped them to construct their personal frame of reference about the nature and the course of their cLBP [28, p28] • First, the quality and continual update of the website encouraged people to visit Oneself again and to continue thinking about self-management [28, p29]
Tailoring and personalisation	Tailoring, specificity and personalisation	<ul style="list-style-type: none"> • Content not tailored to individual needs and/or pain severity • Content perceived not new or relevant 	<ul style="list-style-type: none"> • [...] because some of the advice and exercises were not specific enough, they did not apply to the employee's situation [36, p5] 	<ul style="list-style-type: none"> • Content accounting for individual needs and/or pain severity • Self-identification in content • Opportunity to influence treatment 	<ul style="list-style-type: none"> • <i>..it was obvious that it (the rehabilitation) was about me, it wasn't about just anyone.. it was about my problems, my strengths and how I felt.. they (the HCPs</i>

			<ul style="list-style-type: none"> • Some persons perceived information not new nor relevant. In this case, the use of Oneself lead to feelings of hopelessness: two participants had the impression that again there was no solution for their problem [28, p29] • <i>The exercises that you have on the website are good, but I can't do any of them, no. I tried to do them a bit on the bed, but with my arm that doesn't work, my knees that don't work... There are lots, indeed I had written down those that I could do, but then many times your will is missing (...) Then you get sick of it. I know, that it's for my own good that I should exercise, but after a while I... Then you don't have grand results, and so even</i> 		<p><i>started from a blank page, I was not fitted into an average template of how it ought to be.. it (the rehabilitation) started with my point of view [38, p4-5]</i></p> <ul style="list-style-type: none"> • <i>I really liked the personalization. I thought it was a nice touch. Suggestions were more specific and tailored, which for me made them more relevant and likely for me to use them [37, p9]</i> • <i>Previously I had read about CBT (Cognitive Behavioral Therapy), but I had never thought of it as a help for my condition.. I want to compare this rehabilitation with a smorgasbord from which is it easy to taste [38, p5]</i> • <i>It gives you descriptions and you say: this stuff here.. I see it, I see it! I recognise myself in it,</i>
--	--	--	--	--	---

			<p><i>for my back sometimes I go through periods, moments where I'm, let's say, very diligent, and then sometimes... (...) Yes, it's interesting. But there are always the same things that you then don't do [28, p29]</i></p>		<p><i>I recognise myself here [27, p640]</i></p> <ul style="list-style-type: none"> • Informants experienced that being able to identify themselves with the content in the rehabilitation and finding it trustworthy were important to patient participation and being confirmed [38, p5] • They [informants] described that they were confirmed when they could identify their illness experience and life situation, as well as their own thoughts and cognitions about their pain condition, in the texts and the assignments of the Web-BCPA [38, p7]
Motivation and support	Personal attributes and resources	<ul style="list-style-type: none"> • Adhering to biomedical model of LBP • Seeing LBP as a marginal problem • Preferring other treatment regimens, e.g. with human contact 	<ul style="list-style-type: none"> • <i>I went to a doctor who told me 'there is nothing to do, just resign yourself to it'. So this unleashed really the research to find something. But after eight years I didn't find the magic</i> 	<ul style="list-style-type: none"> • High level of awareness and self-management of LBP • Aware that LBP would not be fixed with a medical solution and ready to accept active role 	<ul style="list-style-type: none"> • In addition, some informants stated that their work experience, such as having a solution-focused work [...] facilitated patient participation in the rehabilitation [38, p6]

		<ul style="list-style-type: none"> • Lack of knowledge about LBP and treatments • Physical health (e.g. pain, fatigue) • Psychological symptoms 	<p><i>cure, unfortunately. And one continuously hears 'they are doing new research!' But hopefully they will arrive in time in order to do something. (...) I'm always in search of the super novelty, the one that heals [28, p30]</i></p> <ul style="list-style-type: none"> • One employee mentioned that the back or neck pain they were suffering from may have prevented them from sitting at a computer [36, p6] • Pain, fatigue and other psychological symptoms were perceived to limit patient participation [38, p6] • Three users could be defined as passive self-managers: They adhered to a traditional biomedical model of cLBP and were convinced that the solution of their problem had to be 	<ul style="list-style-type: none"> • Emotional and cognitive resources, e.g. motivation, interest, commitment and self-confidence in self-management of LBP • Enjoy solution focused work 	<ul style="list-style-type: none"> • <i>I already know which road I have to follow in detail. I need details or confirmation on these details [28, p29]</i> • They described emotions and cognitions that affected patient participation. Having motivation, interest, commitment, and self-confidence were perceived to favor patient participation [38, p6] • Most of the users could be defined as experienced self-managers, in the sense that they had a rather high level of awareness and self-management of cLBP even before knowing Oneself. These people [...] had a rather clear idea about their diagnosis, and knew that they had to play an active role in dealing with their health problem [27, p635]
--	--	--	--	---	--

			<p>found by health professionals. These people went to Oneself to find a definitive medical solution for their cLBP [27, p635]</p> <ul style="list-style-type: none"> • Three users could be defined as latent self-managers. [...] For all of them, cLBP was at the moment a marginal problem, in the sense that it was intermittent and light. These users did not really need to engage in a long-term process of self-management: When pain appeared, they usually dealt with it through some easy coping strategies, such as taking painkillers, going to the chiropractic, etc [27, p636] 		<ul style="list-style-type: none"> • Two users could be defined as novices in terms of self-management. These participants were aware that a medical solution to cLBP did not exist and were ready to accept that they had to become actively involved in their cLBP care. However, they did not know how to do it [27, p635]
	Support to use DHI	<ul style="list-style-type: none"> • HCP unsupportive of use of DHI • No support from authorities 	<ul style="list-style-type: none"> • <i>I planned to complete the program (the Web-BCPA).. I am not sure how much I had left.. probably the last module.. but I was denied sick-leave</i> 	<ul style="list-style-type: none"> • HCP supportive of use of DHI • Support from family • Support from authorities • Support from other suffers (e.g. successful testimonials) 	<ul style="list-style-type: none"> • <i>It's nice knowing that there is someone else [28, p29]</i> • <i>When you are going through a moment when you have backache and you</i>

			<p><i>compensation by the Social Insurance Agency and had to put in a lot of energy to explain my situation and meet with the psychosocial counsellor.. I did not have the strength to do anything else.. I have used so much energy to fight for my cause [12052, 6]</i></p> <ul style="list-style-type: none"> • One employee said, <i>I expected more commitment from my OP. This did not encourage employees to use the program [2120, 5]</i> 		<p><i>read a testimony which says 'yes, there is someone who was able to do it', it gives you hope [28, p29]</i></p> <ul style="list-style-type: none"> • Support, trust and respect from a family member, employer, the Swedish Social Insurance Agency (SSIA) or the Employment Service were experienced to facilitate patient participation in the rehabilitation [38, p6]
Features of DHI	<ul style="list-style-type: none"> • DHI not guiding or supporting participants enough (e.g. to plan for execution of physical activity recommendation from DHI) 	<ul style="list-style-type: none"> • <i>I received the suggestion to ride a bike, but that's currently simply not possible, logistically [37, p10]</i> • <i>If it could ask me to rank the things I enjoy doing and then download weather data for the following days. This could suggest times when I have performed these tasks in the</i> 	<ul style="list-style-type: none"> • Interaction/interactivity • Information about self-management of LBP • Goal-setting • Action-planning • Follow-up and evaluation • Adjusting treatment related to setbacks and progress • Monitoring own progress in graphs • Variation of content • Update of content 	<ul style="list-style-type: none"> • To acquire knowledge and insights were thought of as patient participation, and included self-reflection, self-identification, and feedback [38, p5] • [...] with opportunities to influence and a variety of treatments to choose according to one's own needs and priorities [38, p5] 	

			<p><i>past and also match it with weather predictions. "You played tennis for last Tuesday in the afternoon for 90 minutes. How about from 2 to 4 today when the weather will be clear and 85". [37, p10]</i></p>		<ul style="list-style-type: none">• To adjust a goal or treatment planning in relation to progress or setback was described as patient participation: <i>I feel it is important to set goals and to follow-up those goals.. and to why a goal is reached and why another is not.. this made me aware of that I needed other tools (in the rehabilitation) [38, p6]</i>• Patient participation was reported when informants monitored results shown by the interactive graphs in the Web-BCPA: <i>.. days when I had a lot of pain I used to remain sedentary, and as soon as I had a better day I was eager to do all kinds of activities that day.. before I started with the assignment activity planning (in the Web-BCPA) I was</i>
--	--	--	---	--	--

					<p><i>not aware of how my behaviour related to the days with pain, but by monitoring this over time I started to plan my daily activities in a more balanced way [38, p6]</i></p> <ul style="list-style-type: none">• These effects could be reached thanks to the specificities of the website, that is its interactivity (people could ask specific questions to health professionals who were available daily for responding), [...] dynamism (the website was updated weekly) [...] [28, p31]• The informants' experienced patient participation when they analyzed their situation taken into account their resources and restrictions, set goals for behavior change, and planned treatments and activities. Also, patient participation was stated when
--	--	--	--	--	---

					treatments, self-care, and planning were followed-up and evaluated [38, p6]
HCP factors for support of patients	<ul style="list-style-type: none"> • *Time restrictions of consultations • *Difficulty keeping DHI in mind during consultations • *Difficulty providing patients with accurate information about DHI • *Perceiving no benefit of DHI compared to usual treatment • *Preferring other treatment regimens, e.g. with human contact 	<ul style="list-style-type: none"> • <i>It takes time to get used to the recruitment process and to using the program [36, p5]</i> • A second important barrier for OPs was the limited time available for introducing employees to the program and working with it as well. [...] <i>We lack the time to do this kind of projects [36, p5]</i> • One OP stated that he did not use the program because he did not believe in 'computer-based treatment' of physical pain. He explained, <i>The ability to touch people is an essential element in the treatment of people with back or neck pain. [36, p5]</i> 	<ul style="list-style-type: none"> • *DHI a good medium for counselling employees 	<ul style="list-style-type: none"> • About half of the OPs indicated that a website is a good medium for counselling of employees with back or neck pain [36, p5] 	

			<ul style="list-style-type: none">• One OP stated that he was quite capable of managing the RTW process himself and did not need a program for additional support. Many preferred the more familiar therapies (e.g. physiotherapy) [...]. They preferred having personal contact with employees [36, p5]		
--	--	--	--	--	--

*= HCP perspective; **IT**: information technology; **HCP**: healthcare professional; **DHI**: Digital health intervention